

DESCRIPTION

Species Reactivity	Human/Mouse/Rat
Specificity	Detects human, mouse, and rat Actin in Western blots.
Source	Polyclonal Sheep IgG
Purification	Antigen Affinity-purified
Immunogen	Human platelet-derived Actin
Formulation	Lyophilized from a 0.2 µm filtered solution in PBS with Trehalose. See Certificate of Analysis for details. *Small pack size (-SP) is supplied either lyophilized or as a 0.2 µm filtered solution in PBS.

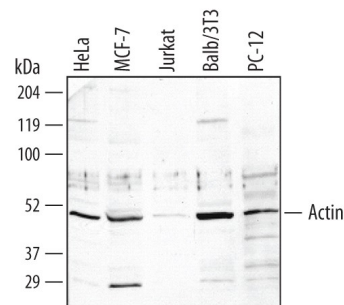
APPLICATIONS

Please Note: Optimal dilutions should be determined by each laboratory for each application. *General Protocols* are available in the *Technical Information* section on our website.

	Recommended Concentration	Sample
Western Blot	1 µg/mL	See Below
Immunocytochemistry	5-15 µg/mL	See Below

DATA

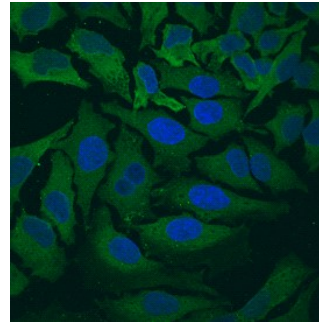
Western Blot



Detection of Human/Mouse/Rat Actin by Western Blot.

Western blot shows lysates of HeLa human cervical epithelial carcinoma cell line, MCF-7 human breast cancer cell line, Jurkat human acute T cell leukemia cell line, Balb/3T3 mouse embryonic fibroblast cell line, and PC-12 rat adrenal pheochromocytoma cell line. PVDF membrane was probed with 1 µg/mL of Sheep Anti-Human/Mouse/Rat Actin Antigen Affinity-purified Polyclonal Antibody (Catalog # AF4000) followed by HRP-conjugated Anti-Sheep IgG Secondary Antibody (Catalog # HAF016). A specific band was detected for Actin at approximately 50 kDa (as indicated). This experiment was conducted under reducing conditions and using Immunoblot Buffer Group 1.

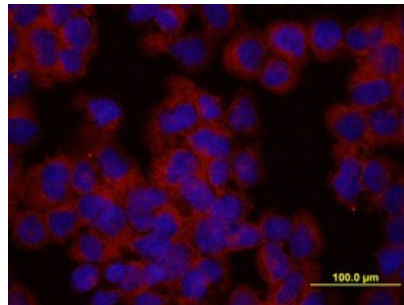
Immunocytochemistry



Actin in HeLa Human Cell Line.

Actin was detected in immersion fixed HeLa human cervical epithelial carcinoma cell line using Sheep Anti-Human/Mouse/Rat Actin Antigen Affinity-purified Polyclonal Antibody (Catalog # AF4000) at 10 µg/mL for 3 hours at room temperature. Cells were stained using the NorthernLights™ 493-conjugated Anti-Sheep IgG Secondary Antibody (green; Catalog # NL012) and counterstained with DAPI (blue). View our protocol for [Fluorescent ICC Staining of Cells on Coverslips](#).

Immunocytochemistry



Actin in HEK293 Human Cell Line.

Actin was detected in immersion fixed HEK293 human embryonic kidney cell line using Sheep Anti-Human/Mouse/Rat Actin Antigen Affinity-purified Polyclonal Antibody (Catalog # AF4000) at 10 µg/mL for 3 hours at room temperature. Cells were stained using the NorthernLights™ 557-conjugated Anti-Sheep IgG Secondary Antibody (red; Catalog # NL010) and counterstained with DAPI (blue). View our protocol for [Fluorescent ICC Staining of Cells on Coverslips](#).

PREPARATION AND STORAGE

Reconstitution	Reconstitute at 0.2 mg/mL in sterile PBS.
Shipping	The product is shipped at ambient temperature. Upon receipt, store it immediately at the temperature recommended below. *Small pack size (-SP) is shipped with polar packs. Upon receipt, store it immediately at -20 to -70 °C
Stability & Storage	Use a manual defrost freezer and avoid repeated freeze-thaw cycles. <ul style="list-style-type: none"> • 12 months from date of receipt, -20 to -70 °C as supplied. • 1 month, 2 to 8 °C under sterile conditions after reconstitution. • 6 months, -20 to -70 °C under sterile conditions after reconstitution.

BACKGROUND

The Actin protein, a component of the eukaryotic cytoskeleton, is highly conserved between multiple species. Levels of the Actin protein may vary between different cell types, but are consistent within a given cell type, and for this reason, Actin protein levels are considered an internal control for protein loading.