

## DESCRIPTION

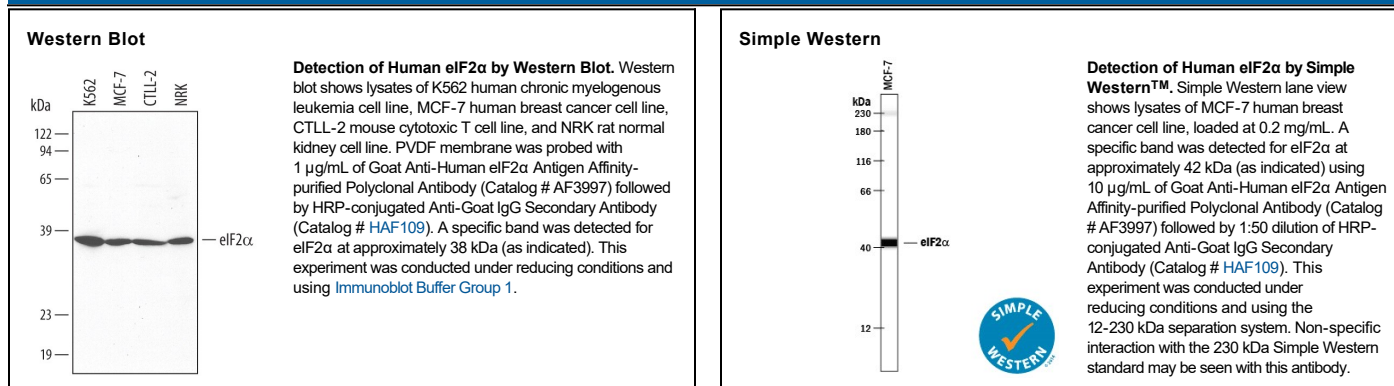
<b>Species Reactivity</b>	Human
<b>Specificity</b>	Detects human, mouse, and rat eIF2 $\alpha$ in Western blots.
<b>Source</b>	Polyclonal Goat IgG
<b>Purification</b>	Antigen Affinity-purified
<b>Immunogen</b>	<i>E. coli</i> -derived recombinant human eIF2 $\alpha$ Met1-Asp315 Accession # Q53XC0
<b>Formulation</b>	Lyophilized from a 0.2 $\mu$ m filtered solution in PBS with Trehalose. See Certificate of Analysis for details. *Small pack size (-SP) is supplied either lyophilized or as a 0.2 $\mu$ m filtered solution in PBS.

## APPLICATIONS

**Please Note:** Optimal dilutions should be determined by each laboratory for each application. [General Protocols](#) are available in the Technical Information section on our website.

	<b>Recommended Concentration</b>	<b>Sample</b>
<b>Western Blot</b>	1 $\mu$ g/mL	See Below
<b>Simple Western</b>	10 $\mu$ g/mL	See Below

## DATA



## PREPARATION AND STORAGE

<b>Reconstitution</b>	Reconstitute at 0.2 mg/mL in sterile PBS.
<b>Shipping</b>	The product is shipped at ambient temperature. Upon receipt, store it immediately at the temperature recommended below. *Small pack size (-SP) is shipped with polar packs. Upon receipt, store it immediately at -20 to -70 °C
<b>Stability &amp; Storage</b>	<b>Use a manual defrost freezer and avoid repeated freeze-thaw cycles.</b> <ul style="list-style-type: none"> <li>12 months from date of receipt, -20 to -70 °C as supplied.</li> <li>1 month, 2 to 8 °C under sterile conditions after reconstitution.</li> <li>6 months, -20 to -70 °C under sterile conditions after reconstitution.</li> </ul>

## BACKGROUND

eIF2 $\alpha$  (eukaryotic translation initiation factor 2 alpha subunit) is a subunit of the eIF2 protein, an important regulator of translation initiation. Phosphorylation of eIF2 $\alpha$  on Ser 52 increases the affinity of eIF2 $\alpha$  for eIF2B, a guanine nucleotide exchange factor needed for the recycling of eIF2-GDP to eIF2-GTP. Reduction of eIF2-GTP levels leads to the suppression of the overall rate of protein synthesis. Heme-regulated inhibitor (HRI), ER-resident protein kinase PERK, dsRNA activated protein kinase PKR, and the homologue of the *S. cerevisiae* protein kinase GCN2 are all eIF2 $\alpha$  kinases.