

DESCRIPTION

Species Reactivity	Human
Specificity	Detects human TEM8/ANTXR1 in direct ELISAs and Western blots.
Source	Polyclonal Goat IgG
Purification	Antigen Affinity-purified
Immunogen	<i>E. coli</i> -derived recombinant human TEM8/ANTXR1 Gln28-Gly320 Accession # Q9H6X2
Formulation	Lyophilized from a 0.2 µm filtered solution in PBS with Trehalose. See Certificate of Analysis for details. *Small pack size (-SP) is supplied as a 0.2 µm filtered solution in PBS.

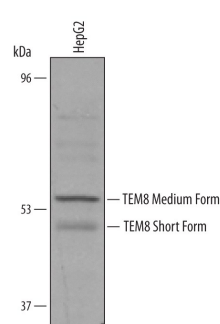
APPLICATIONS

Please Note: Optimal dilutions should be determined by each laboratory for each application. *General Protocols* are available in the *Technical Information* section on our website.

	Recommended Concentration	Sample
Western Blot	1 µg/mL	See Below
Immunocytochemistry	5-15 µg/mL	See Below
Immunohistochemistry	5-15 µg/mL	See Below

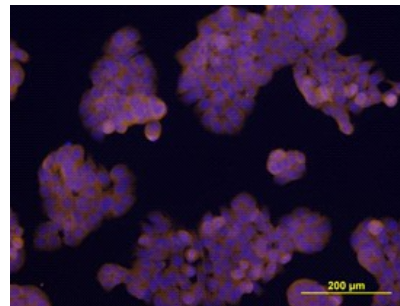
DATA

Western Blot



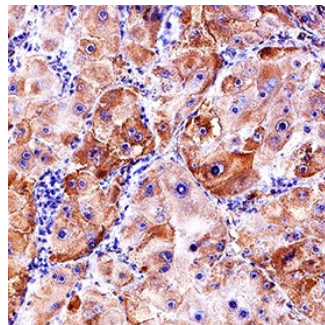
Detection of Human TEM8 Isoform 1 by Western Blot. Western blot shows lysates of HepG2 human hepatocellular carcinoma cell line. PVDF membrane was probed with 1 µg/mL of Goat Anti-Human TEM8 Isoform 1 Antigen Affinity-purified Polyclonal Antibody (Catalog # AF3886) followed by HRP-conjugated Anti-Goat IgG Secondary Antibody (Catalog # HAF019). Specific bands were detected for TEM8 at approximately 55 and 45 kDa (as indicated). This experiment was conducted under reducing conditions and using Immunoblot Buffer Group 8.

Immunocytochemistry



TEM8 in HT-29 Human Cell Line. TEM8 was detected in immersion fixed HT-29 human colon adenocarcinoma cell line using Goat Anti-Human TEM8 Isoform 1 Antigen Affinity-purified Polyclonal Antibody (Catalog # AF3886) at 10 µg/mL for 3 hours at room temperature. Cells were stained using the NorthernLights™ 557-conjugated Anti-Goat IgG Secondary Antibody (yellow; Catalog # NL001) and counterstained with DAPI (blue). View our protocol for [Fluorescent ICC Staining of Cells on Coverslips](#).

Immunohistochemistry



TEM8/ANTXR1 in Human Liver Cancer Tissue. TEM8/ANTXR1 was detected in immersion fixed paraffin-embedded sections of human liver cancer tissue using Goat Anti-Human TEM8/ANTXR1 Isoform 1 Antigen Affinity-purified Polyclonal Antibody (Catalog # AF3886) at 3 µg/mL for 1 hour at room temperature followed by incubation with the Anti-Goat IgG VisUCyte™ HRP Polymer Antibody (Catalog # VC004). Tissue was stained using DAB (brown) and counterstained with hematoxylin (blue). Specific staining was localized to cytoplasm and plasma membrane. View our protocol for [IHC Staining with VisUCyte HRP Polymer Detection Reagents](#).

PREPARATION AND STORAGE

Reconstitution	Reconstitute at 0.2 mg/mL in sterile PBS.
Shipping	The product is shipped at ambient temperature. Upon receipt, store it immediately at the temperature recommended below. *Small pack size (-SP) is shipped with polar packs. Upon receipt, store it immediately at -20 to -70 °C
Stability & Storage	Use a manual defrost freezer and avoid repeated freeze-thaw cycles. <ul style="list-style-type: none"> ● 12 months from date of receipt, -20 to -70 °C as supplied. ● 1 month, 2 to 8 °C under sterile conditions after reconstitution. ● 6 months, -20 to -70 °C under sterile conditions after reconstitution.

BACKGROUND

TEM8, also called ATR1, is a glycoprotein of the anthrax toxin receptor family that is expressed by endothelial cells. Type I transmembrane isoforms of 564 aa (80-85 kDa) and 368 aa (60 kDa) and potentially secreted isoforms of 330 aa and 297 aa (45 kDa) are differentially expressed. All diverge at the C-terminal end but share the N-terminal vWFA domain that binds the anthrax toxin PA subunit as well as collagens I and IV. Human TEM8 shares 99% aa identity with mouse and rat and 92% identity with canine and chick TEM8 within the extracellular domain.