

DESCRIPTION

Species Reactivity	Human
Specificity	Detects human Lipin 1 in direct ELISAs and Western blots. In direct ELISAs and Western blots, less than 2% cross-reactivity with recombinant human (rh) Lipin 2 and rhLipin 3 is observed.
Source	Polyclonal Goat IgG
Purification	Antigen Affinity-purified
Immunogen	<i>E. coli</i> -derived recombinant human Lipin 1 Asp448-Leu574 Accession # Q14693
Formulation	Lyophilized from a 0.2 µm filtered solution in PBS with Trehalose. See Certificate of Analysis for details. *Small pack size (-SP) is supplied as a 0.2 µm filtered solution in PBS.

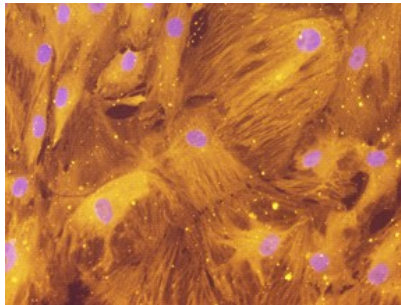
APPLICATIONS

Please Note: Optimal dilutions should be determined by each laboratory for each application. *General Protocols* are available in the *Technical Information* section on our website.

	Recommended Concentration	Sample
Western Blot	0.1 µg/mL	Recombinant Human Lipin 1
Immunocytochemistry	5-15 µg/mL	See Below

DATA

Immunocytochemistry



Lipin 1 in Human Adipocytes.
Lipin 1 was detected in immersion fixed human mesenchymal stem cell-derived adipocytes using Goat Anti-Human Lipin 1 Antigen Affinity-purified Polyclonal Antibody (Catalog # AF3885) at 10 µg/mL for 3 hours at room temperature. Cells were stained using the NorthernLights™ 557-conjugated Anti-Goat IgG Secondary Antibody (yellow; Catalog # NL001) and counterstained with DAPI (blue). Specific staining was localized to cytoplasm. View our protocol for [Fluorescent ICC Staining of Cells on Coverslips](#).

PREPARATION AND STORAGE

Reconstitution	Reconstitute at 0.2 mg/mL in sterile PBS.
Shipping	The product is shipped at ambient temperature. Upon receipt, store it immediately at the temperature recommended below. *Small pack size (-SP) is shipped with polar packs. Upon receipt, store it immediately at -20 to -70 °C
Stability & Storage	Use a manual defrost freezer and avoid repeated freeze-thaw cycles. <ul style="list-style-type: none"> • 12 months from date of receipt, -20 to -70 °C as supplied. • 1 month, 2 to 8 °C under sterile conditions after reconstitution. • 6 months, -20 to -70 °C under sterile conditions after reconstitution.

BACKGROUND

Lipin 1 is a 100 kDa phosphatidate phosphatase. Mammalian Lipin 1 has been identified as an enzyme that regulates fat metabolism. There is one human Lipin-1. In mice, two Lipin-1 isoforms have been reported, alpha and beta. Lipin 1α is a nuclear protein and is 96% and 98% identical to human Lipin 1 and rat Lipin 1α, respectively. Lipin 1β is cytoplasmic.