

DESCRIPTION

Species Reactivity	Human
Specificity	Detects human Notch-4 Intracellular Domain in direct ELISAs and Western blots. In direct ELISAs and Western blots, less than 1% cross-reactivity with recombinant human (rh) Notch-1 Intracellular Domain and rhNotch-2 Intracellular Domain is observed.
Source	Polyclonal Goat IgG
Purification	Antigen Affinity-purified
Immunogen	<i>E. coli</i> -derived recombinant human Notch-4 Intracellular Domain Gly1778-Lys2003 Accession # Q99466
Formulation	Lyophilized from a 0.2 µm filtered solution in PBS with Trehalose. See Certificate of Analysis for details. *Small pack size (-SP) is supplied either lyophilized or as a 0.2 µm filtered solution in PBS.

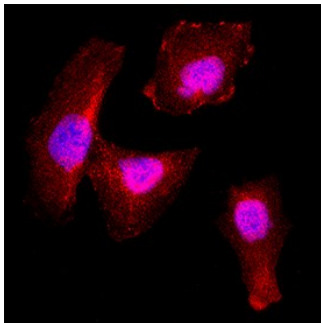
APPLICATIONS

Please Note: Optimal dilutions should be determined by each laboratory for each application. *General Protocols* are available in the *Technical Information* section on our website.

	Recommended Concentration	Sample
Western Blot	0.1 µg/mL	Recombinant Human Notch-4 Intracellular Domain
Immunocytochemistry	5-15 µg/mL	Immersion fixed SH-SY5Y human neuroblastoma cell line

DATA

Immunocytochemistry



Notch-4 in SH-SY5Y Human Cell Line.
Notch-4 was detected in immersion fixed SH-SY5Y human neuroblastoma cell line using Goat Anti-Human Notch-4 Intracellular Domain Antigen Affinity-purified Polyclonal Antibody (Catalog # AF3847) at 15 µg/mL for 3 hours at room temperature. Cells were stained using the NorthernLights™ 557-conjugated Anti-Goat IgG Secondary Antibody (red; Catalog # NL001) and counterstained with DAPI (blue). Specific staining was localized to cytoplasm and nuclei. Staining was performed using our protocol for Fluorescent ICC Staining of Non-adherent Cells.

PREPARATION AND STORAGE

Reconstitution	Reconstitute at 0.2 mg/mL in sterile PBS.
Shipping	The product is shipped at ambient temperature. Upon receipt, store it immediately at the temperature recommended below. *Small pack size (-SP) is shipped with polar packs. Upon receipt, store it immediately at -20 to -70 °C
Stability & Storage	Use a manual defrost freezer and avoid repeated freeze-thaw cycles. <ul style="list-style-type: none"> • 12 months from date of receipt, -20 to -70 °C as supplied. • 1 month, 2 to 8 °C under sterile conditions after reconstitution. • 6 months, -20 to -70 °C under sterile conditions after reconstitution.

BACKGROUND

Notch-4 is a 250 kDa heterodimeric membrane protein with a C-terminal transmembrane fragment covalently linked to an N-terminal extracellular fragment. It functions as a receptor for transmembrane ligands such as the Jagged and Delta proteins. Upon ligand binding, it undergoes sequential proteolytic processing to release the intracellular domain (NICD), which is translocated to the nucleus where it activates target genes. In the region used as immunogen, human and mouse Notch-4 share 78% amino acid sequence homology.