

DESCRIPTION

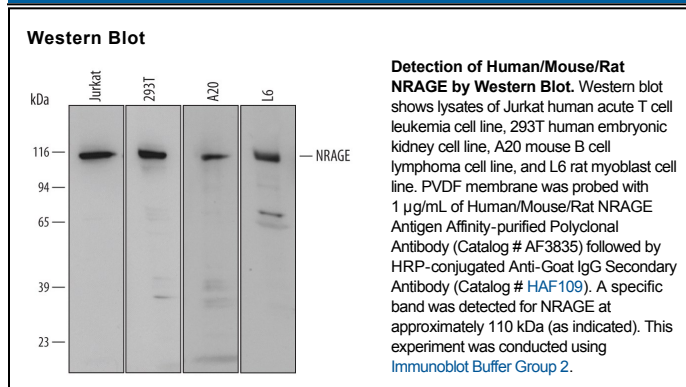
Species Reactivity	Human/Mouse/Rat
Specificity	Detects endogenous human, mouse and rat NRAGE in Western blot.
Source	Polyclonal Goat IgG
Purification	Antigen Affinity-purified
Immunogen	<i>E. coli</i> -derived recombinant human NRAGE Arg73-Asn254 Accession # Q9Y5V3
Formulation	Lyophilized from a 0.2 µm filtered solution in PBS with Trehalose. See Certificate of Analysis for details. *Small pack size (-SP) is supplied as a 0.2 µm filtered solution in PBS.

APPLICATIONS

Please Note: Optimal dilutions should be determined by each laboratory for each application. *General Protocols* are available in the *Technical Information* section on our website.

	Recommended Concentration	Sample
Western Blot	1 µg/mL	See Below

DATA



PREPARATION AND STORAGE

Reconstitution	Reconstitute at 0.2 mg/mL in sterile PBS.
Shipping	The product is shipped at ambient temperature. Upon receipt, store it immediately at the temperature recommended below. *Small pack size (-SP) is shipped with polar packs. Upon receipt, store it immediately at -20 to -70 °C
Stability & Storage	Use a manual defrost freezer and avoid repeated freeze-thaw cycles. <ul style="list-style-type: none"> ● 12 months from date of receipt, -20 to -70 °C as supplied. ● 1 month, 2 to 8 °C under sterile conditions after reconstitution. ● 6 months, -20 to -70 °C under sterile conditions after reconstitution.

BACKGROUND

Neurotrophin receptor-interacting MAGE homolog (NRAGE, also known as MAGE-D1 or Dlxin-1) is a ubiquitously expressed cytosolic protein that is a member of the melanoma-associated antigen (MAGE) family. The 778 aa human NRAGE protein contains a segment with 22 repeats of a W(P/Q)xPxx motif, followed by a MAGE domain. In the brain, NRAGE interacts with p75NTR, blocks cell cycle progression and facilitates NGF-dependent apoptosis. Over amino acids 73-254, human NRAGE shares 87% and 73% aa identity with mouse and rat NRAGE, respectively.