

DESCRIPTION

Species Reactivity	Mouse
Specificity	Detects mouse Serpin E1 in direct ELISAs and Western blots. In direct ELISAs, approximately 50% cross-reactivity with recombinant human Serpin E1 is observed.
Source	Polyclonal Goat IgG
Purification	Antigen Affinity-purified
Immunogen	Mouse myeloma cell line NS0-derived recombinant mouse Serpin E1/PAI-1 Leu24-Ser402 Accession # AAH54091
Formulation	Lyophilized from a 0.2 µm filtered solution in PBS with Trehalose. See Certificate of Analysis for details. *Small pack size (-SP) is supplied either lyophilized or as a 0.2 µm filtered solution in PBS.

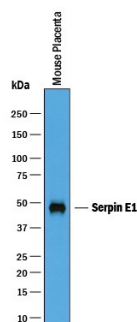
APPLICATIONS

Please Note: Optimal dilutions should be determined by each laboratory for each application. [General Protocols](#) are available in the Technical Information section on our website.

	Recommended Concentration	Sample
Western Blot	0.25 µg/mL	See Below
Immunoprecipitation	25 µg/mL	Conditioned cell culture medium spiked with Recombinant Mouse Serpin E1/PAI-1, see our available Western blot detection antibodies
Simple Western	12.5 µg/mL	See Below

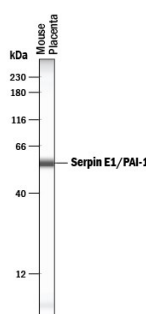
DATA

Western Blot



Detection of Mouse Serpin E1/PAI-1 by Western Blot. Western blot shows lysates of mouse placenta tissue. PVDF membrane was probed with 0.25 µg/mL of Goat Anti-Mouse Serpin E1/PAI-1 Antigen Affinity-purified Polyclonal Antibody (Catalog # AF3828) followed by HRP-conjugated Anti-Goat IgG Secondary Antibody (Catalog # HAF019). A specific band was detected for Serpin E1/PAI-1 at approximately 45-50 kDa (as indicated). This experiment was conducted under reducing conditions and using Immunoblot Buffer Group 1.

Simple Western



Detection of Mouse Serpin E1/PAI-1 by Simple Western™. Simple Western lane view shows lysates of mouse placenta tissue, loaded at 0.2 mg/mL. A specific band was detected for Serpin E1/PAI-1 at approximately 56 kDa (as indicated) using 12.5 µg/mL of Goat Anti-Mouse Serpin E1/PAI-1 Antigen Affinity-purified Polyclonal Antibody (Catalog # AF3828) followed by 1:50 dilution of HRP-conjugated Anti-Goat IgG Secondary Antibody (Catalog # HAF109). This experiment was conducted under reducing conditions and using the 12-230 kDa separation system.



PREPARATION AND STORAGE

Reconstitution	Reconstitute at 0.2 mg/mL in sterile PBS.
Shipping	The product is shipped at ambient temperature. Upon receipt, store it immediately at the temperature recommended below. *Small pack size (-SP) is shipped with polar packs. Upon receipt, store it immediately at -20 to -70 °C
Stability & Storage	Use a manual defrost freezer and avoid repeated freeze-thaw cycles. <ul style="list-style-type: none"> • 12 months from date of receipt, -20 to -70 °C as supplied. • 1 month, 2 to 8 °C under sterile conditions after reconstitution. • 6 months, -20 to -70 °C under sterile conditions after reconstitution.

BACKGROUND

Serpin E1, also known as Plasminogen Activator Inhibitor-1 (PAI-1), is the principal inhibitor of urokinase-type and tissue-type plasminogen activators. It plays a major role in many processes such as angiogenesis, tumor invasion, and obesity. The amino acid sequence of mouse PAI-1 is 89%, 79% and 76% identical to that of rat, human/chimpanzee and dog.