

DESCRIPTION

Species Reactivity	Human
Specificity	Detects human ASC in Western blots.
Source	Polyclonal Goat IgG
Purification	Antigen Affinity-purified
Immunogen	<i>E. coli</i> -derived recombinant human ASC Leu112-Ser195 Accession # Q9ULZ3
Formulation	Lyophilized from a 0.2 µm filtered solution in PBS with Trehalose. See Certificate of Analysis for details. *Small pack size (-SP) is supplied either lyophilized or as a 0.2 µm filtered solution in PBS.

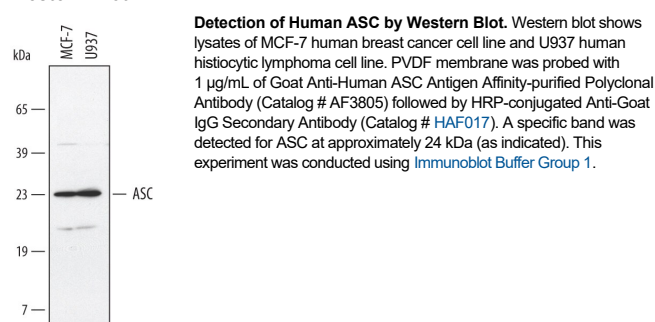
APPLICATIONS

Please Note: Optimal dilutions should be determined by each laboratory for each application. [General Protocols](#) are available in the Technical Information section on our website.

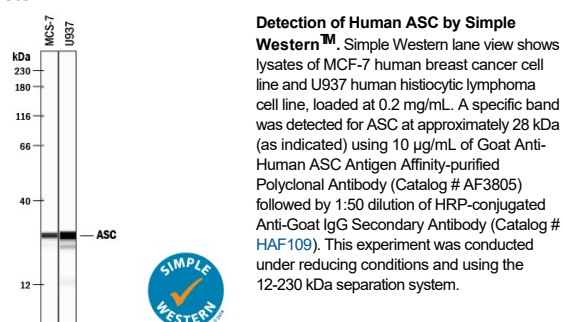
	Recommended Concentration	Sample
Western Blot	1 µg/mL	See Below
Simple Western	10 µg/mL	See Below
Knockout Validated	ASC is specifically detected in MCF-7 human breast cancer parental cell line but is not detectable in ASC knockout MCF-7 cell line.	

DATA

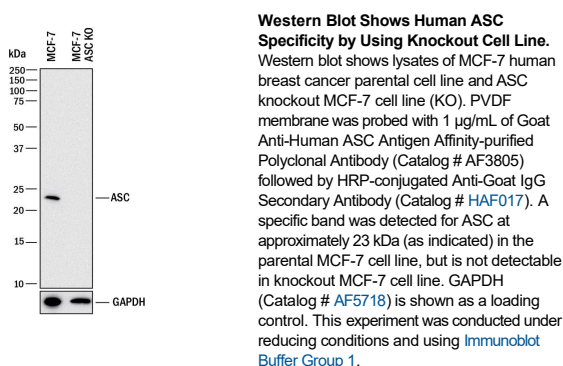
Western Blot



Simple Western



Knockout Validated



PREPARATION AND STORAGE

Reconstitution	Reconstitute at 0.2 mg/mL in sterile PBS.
Shipping	The product is shipped at ambient temperature. Upon receipt, store it immediately at the temperature recommended below. *Small pack size (-SP) is shipped with polar packs. Upon receipt, store it immediately at -20 to -70 °C
Stability & Storage	Use a manual defrost freezer and avoid repeated freeze-thaw cycles. <ul style="list-style-type: none"> 12 months from date of receipt, -20 to -70 °C as supplied. 1 month, 2 to 8 °C under sterile conditions after reconstitution. 6 months, -20 to -70 °C under sterile conditions after reconstitution.

BACKGROUND

Apoptosis-associated speck-like protein containing a CARD (ASC) is also known as Target of Methylation-mediated Silencing (TMS-1) and PYD and CARD-domain containing protein (PYCARD). ASC is a p53 target protein that serves as an adaptor to the pro-apoptotic Bax molecule. The interaction of ASC with Bax promotes apoptosis in response to many apoptotic stimuli.