

## DESCRIPTION

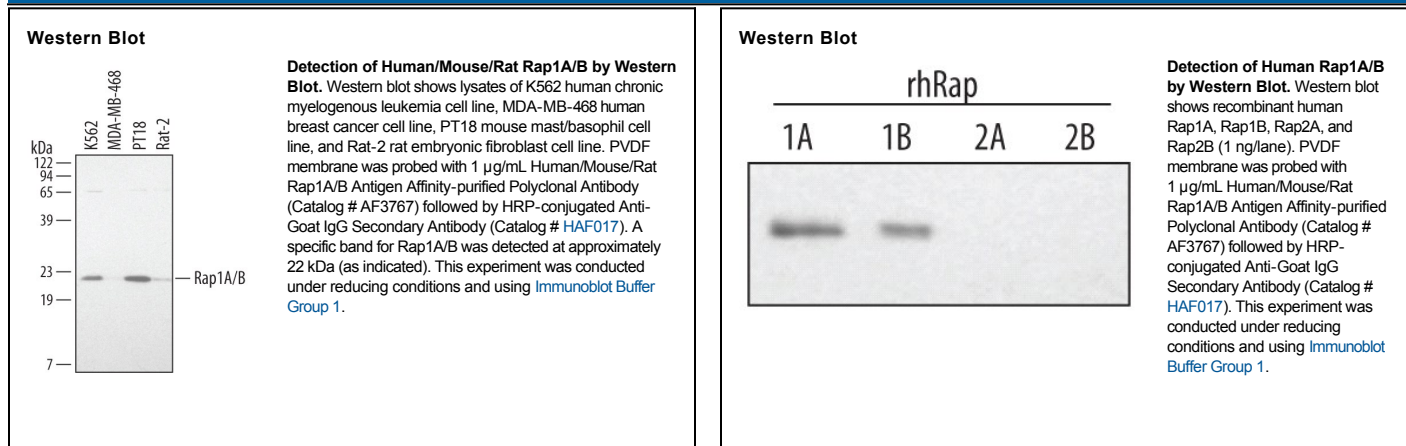
<b>Species Reactivity</b>	Human/Mouse/Rat
<b>Specificity</b>	Detects human, mouse and rat Rap1A/B. The antibody is highly specific for Rap1A/B and detects recombinant human Rap2A only upon prolonged film exposure.
<b>Source</b>	Polyclonal Goat IgG
<b>Purification</b>	Antigen Affinity-purified
<b>Immunogen</b>	<i>E. coli</i> -derived recombinant human Rap1A Met1-Leu184 Accession # P62834
<b>Formulation</b>	Lyophilized from a 0.2 µm filtered solution in PBS with Trehalose. See Certificate of Analysis for details. *Small pack size (-SP) is supplied as a 0.2 µm filtered solution in PBS.

## APPLICATIONS

**Please Note:** Optimal dilutions should be determined by each laboratory for each application. *General Protocols* are available in the *Technical Information* section on our website.

	Recommended Concentration	Sample
<b>Western Blot</b>	1 µg/mL	See Below
<b>Immunohistochemistry</b>	5-15 µg/mL	Immersion fixed paraffin-embedded sections of human skin and human squamous cell carcinoma tissue

## DATA



## PREPARATION AND STORAGE

<b>Reconstitution</b>	Reconstitute at 0.2 mg/mL in sterile PBS.
<b>Shipping</b>	The product is shipped at ambient temperature. Upon receipt, store it immediately at the temperature recommended below. *Small pack size (-SP) is shipped with polar packs. Upon receipt, store it immediately at -20 to -70 °C
<b>Stability &amp; Storage</b>	<b>Use a manual defrost freezer and avoid repeated freeze-thaw cycles.</b> <ul style="list-style-type: none"> <li>● 12 months from date of receipt, -20 to -70 °C as supplied.</li> <li>● 1 month, 2 to 8 °C under sterile conditions after reconstitution.</li> <li>● 6 months, -20 to -70 °C under sterile conditions after reconstitution.</li> </ul>

## BACKGROUND

The Ras-related proteins Rap1A and Rap1B share 95% identity and together with Rap2A and Rap2B constitute a grouping within the Ras superfamily of small GTPases. Like other GTPases, Rap proteins transduce signals by cycling between an active GTP-bound and an inactive GDP-bound state. Rap1 counteracts the mitogenic function of Ras, possibly through competitive interactions with Ras GAPs and Raf, and is implicated in the regulation of integrins.