

DESCRIPTION

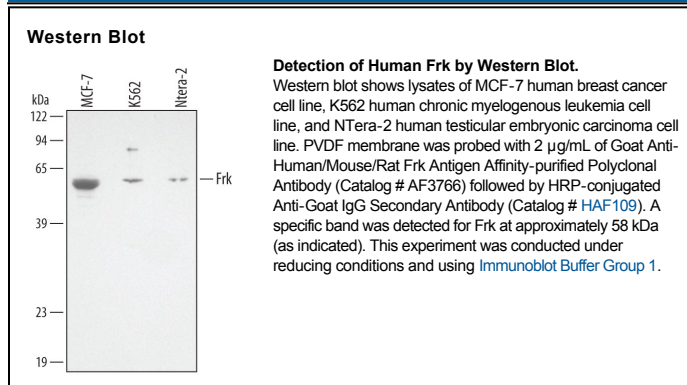
Species Reactivity	Human/Mouse/Rat
Specificity	Detects human, mouse, and rat Frk in Western blots.
Source	Polyclonal Goat IgG
Purification	Antigen Affinity-purified
Immunogen	<i>E. coli</i> -derived recombinant human Frk Met1-Glu107 Accession # P42685
Formulation	Lyophilized from a 0.2 µm filtered solution in PBS with Trehalose. See Certificate of Analysis for details. *Small pack size (-SP) is supplied as a 0.2 µm filtered solution in PBS.

APPLICATIONS

Please Note: Optimal dilutions should be determined by each laboratory for each application. *General Protocols* are available in the *Technical Information* section on our website.

	Recommended Concentration	Sample
Western Blot	2 µg/mL	See Below
Immunohistochemistry	5-15 µg/mL	Immersion fixed paraffin-embedded sections of human breast cancer tissue subjected to Antigen Retrieval Reagent-Basic (Catalog # CTS013)

DATA



PREPARATION AND STORAGE

Reconstitution	Reconstitute at 0.2 mg/mL in sterile PBS.
Shipping	The product is shipped at ambient temperature. Upon receipt, store it immediately at the temperature recommended below. *Small pack size (-SP) is shipped with polar packs. Upon receipt, store it immediately at -20 to -70 °C
Stability & Storage	Use a manual defrost freezer and avoid repeated freeze-thaw cycles. <ul style="list-style-type: none"> ● 12 months from date of receipt, -20 to -70 °C as supplied. ● 1 month, 2 to 8 °C under sterile conditions after reconstitution. ● 6 months, -20 to -70 °C under sterile conditions after reconstitution.

BACKGROUND

Fyn-related kinase (Frk) is a tyrosine kinase of the Src family. Also known as Rak, Gtk, and lyk, Frk is predominantly expressed in epithelial tissues. Frk protein is 49% and 47% identical to Fyn and Csk, respectively. Src family kinases regulate an array of cellular processes, including growth factor signaling, cytoskeleton dynamics, and cell proliferation.