

DESCRIPTION

Species Reactivity	Human/Rat
Specificity	Detects human and rat PKC β 1 in direct ELISAs. In direct ELISAs, less than 1% cross-reactivity with recombinant human PKC δ is observed.
Source	Polyclonal Goat IgG
Purification	Antigen Affinity-purified
Immunogen	<i>E. coli</i> -derived recombinant human PKC β 1 Lys607-Val671 Accession # P05771
Formulation	Lyophilized from a 0.2 μ m filtered solution in PBS with Trehalose. See Certificate of Analysis for details. *Small pack size (-SP) is supplied either lyophilized or as a 0.2 μ m filtered solution in PBS.

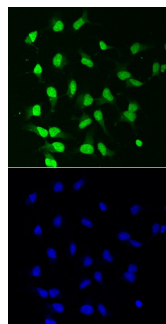
APPLICATIONS

Please Note: Optimal dilutions should be determined by each laboratory for each application. *General Protocols* are available in the *Technical Information* section on our website.

	Recommended Concentration	Sample
Western Blot	0.1 μ g/mL	Recombinant Human PKC β 1 Recombinant Rat PKC β 1
Immunocytochemistry	5-15 μ g/mL	See Below

DATA

Immunocytochemistry



PKC β 1 in Rat Cortical Stem Cells. PKC β 1 was detected in immersion fixed rat cortical stem cells using Goat Anti-Human/Rat PKC β 1 Antigen Affinity-purified Polyclonal Antibody (Catalog # AF3759) at 10 μ g/mL for 3 hours at room temperature. Cells were stained using the NorthernLights™ 493-conjugated Anti-Goat IgG Secondary Antibody (green, upper panel; Catalog # NL003) and counterstained with DAPI (blue, lower panel). View our protocol for [Fluorescent ICC Staining of Cells on Coverslips](#).

PREPARATION AND STORAGE

Reconstitution	Reconstitute at 0.2 mg/mL in sterile PBS.
Shipping	The product is shipped at ambient temperature. Upon receipt, store it immediately at the temperature recommended below. *Small pack size (-SP) is shipped with polar packs. Upon receipt, store it immediately at -20 to -70 °C
Stability & Storage	Use a manual defrost freezer and avoid repeated freeze-thaw cycles. <ul style="list-style-type: none"> ● 12 months from date of receipt, -20 to -70 °C as supplied. ● 1 month, 2 to 8 °C under sterile conditions after reconstitution. ● 6 months, -20 to -70 °C under sterile conditions after reconstitution.

BACKGROUND

PKC β 1 is a 671 aa, 77 kDa member of the PKC subfamily of Ser/Thr family of protein kinases. PKC β 1 is a Ca²⁺-activated, phospholipid-dependent enzyme responsible for the phosphorylation of multiple proteins. Human PKC β 2 is an alternatively spliced isoform with a 52 aa substitution of the 50 C-terminal residues. In monkey, five alternatively spliced forms have been reported. Over the region used as immunogen, human and rat PKC β 1 are 100% identical.