

DESCRIPTION

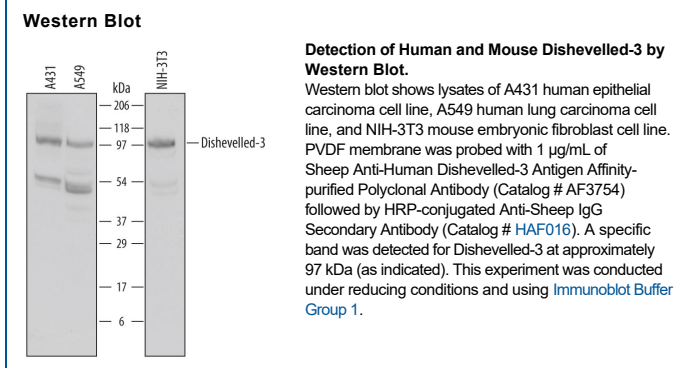
Species Reactivity	Human
Specificity	Detects human Dishevelled-3 in direct ELISAs and Western blots. In direct ELISAs and Western blots, less than 1% cross-reactivity with recombinant human Dishevelled-1 and recombinant human Dishevelled-2 is observed.
Source	Polyclonal Sheep IgG
Purification	Antigen Affinity-purified
Immunogen	<i>E. coli</i> -derived recombinant human Dishevelled-3 His545-Gly654 Accession # Q92997
Formulation	Lyophilized from a 0.2 µm filtered solution in PBS with Trehalose. See Certificate of Analysis for details. *Small pack size (-SP) is supplied either lyophilized or as a 0.2 µm filtered solution in PBS.

APPLICATIONS

Please Note: Optimal dilutions should be determined by each laboratory for each application. [General Protocols](#) are available in the Technical Information section on our website.

	Recommended Concentration	Sample
Western Blot	1 µg/mL	See Below
Immunohistochemistry	5-15 µg/mL	Immersion fixed paraffin-embedded sections of human liver cancer tissue

DATA



PREPARATION AND STORAGE

Reconstitution	Reconstitute at 0.2 mg/mL in sterile PBS.
Shipping	The product is shipped at ambient temperature. Upon receipt, store it immediately at the temperature recommended below. *Small pack size (-SP) is shipped with polar packs. Upon receipt, store it immediately at -20 to -70 °C
Stability & Storage	Use a manual defrost freezer and avoid repeated freeze-thaw cycles. <ul style="list-style-type: none"> 12 months from date of receipt, -20 to -70 °C as supplied. 1 month, 2 to 8 °C under sterile conditions after reconstitution. 6 months, -20 to -70 °C under sterile conditions after reconstitution.

BACKGROUND

Dishevelled-3 is one of three mammalian multi-modulated Dishevelled proteins that have important roles in the canonical and non-canonical Wnt pathways. Human Dishevelled-3 is a 716 amino acid residue protein with an N-terminal DIX domain, a central PZD domain, and a DEP domain. Over the region used as immunogen, human Dishevelled-3 shares 99% amino acid sequence homology with mouse and canine Dishevelled-3.