

#### DESCRIPTION

<b>Species Reactivity</b>	Mouse
<b>Specificity</b>	Detects mouse GLI-2 in direct ELISAs and Western blots.
<b>Source</b>	Polyclonal Goat IgG
<b>Purification</b>	Antigen Affinity-purified
<b>Immunogen</b>	<i>E. coli</i> -derived recombinant mouse GLI-2 Met1-Glu416 Accession # NP_001074594
<b>Formulation</b>	Lyophilized from a 0.2 µm filtered solution in PBS with Trehalose. See Certificate of Analysis for details. *Small pack size (-SP) is supplied as a 0.2 µm filtered solution in PBS.

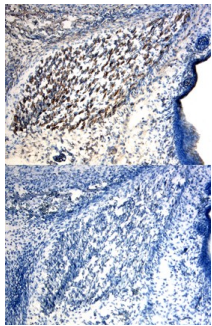
#### APPLICATIONS

**Please Note:** Optimal dilutions should be determined by each laboratory for each application. *General Protocols* are available in the *Technical Information* section on our website.

	<b>Recommended Concentration</b>	<b>Sample</b>
<b>Western Blot</b>	0.1 µg/mL	Recombinant Mouse GLI-2
<b>Immunohistochemistry</b>	5-15 µg/mL	See Below

#### DATA

##### Immunohistochemistry



**GLI-2 in Mouse Embryo.** GLI-2 was detected in immersion fixed frozen sections of mouse embryo (15 d.p.c.) using Goat Anti-Mouse GLI-2 Antigen Affinity-purified Polyclonal Antibody (Catalog # AF3635) at 15 µg/mL overnight at 4 °C. Tissue was stained using the Anti-Goat HRP-DAB Cell & Tissue Staining Kit (brown; Catalog # CTS008) and counterstained with hematoxylin (blue). Lower panel shows a lack of labeling when primary antibodies are omitted and tissue is stained only with secondary antibody followed by incubation with detection reagents. Specific staining was localized to developing muscle. View our protocol for [Chromogenic IHC Staining of Frozen Tissue Sections](#).

#### PREPARATION AND STORAGE

<b>Reconstitution</b>	Reconstitute at 0.2 mg/mL in sterile PBS.
<b>Shipping</b>	The product is shipped at ambient temperature. Upon receipt, store it immediately at the temperature recommended below. *Small pack size (-SP) is shipped with polar packs. Upon receipt, store it immediately at -20 to -70 °C
<b>Stability &amp; Storage</b>	<b>Use a manual defrost freezer and avoid repeated freeze-thaw cycles.</b> <ul style="list-style-type: none"> <li>● 12 months from date of receipt, -20 to -70 °C as supplied.</li> <li>● 1 month, 2 to 8 °C under sterile conditions after reconstitution.</li> <li>● 6 months, -20 to -70 °C under sterile conditions after reconstitution.</li> </ul>

#### BACKGROUND

Mouse GLI-2 is a 185 kDa biopotential transcription regulator of the hedgehog signaling pathway. It contains 5 conserved tandem C2H2 zinc finger domains that are flanked by a repression domain at the N-terminal region and an activation domain in the C-terminal region. At least two additional isoforms that have amino acid substitutions/truncations in the region corresponding to amino acid residues 192-350 of isoform 1 have been described. Transcriptional activity of GLI-2 is regulated by proteolytic processing and degradation. Within the region used as immunogen, mouse GLI-2 shares 91% and 97% amino acid sequence homology with that of human and rat GLI-2, respectively.