

DESCRIPTION

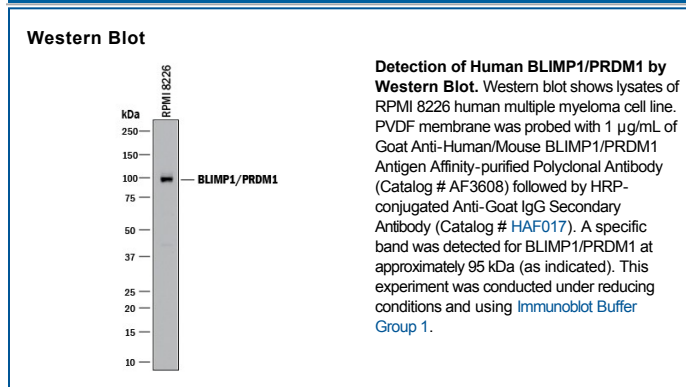
Species Reactivity	Human/Mouse
Specificity	Detects human and mouse BLIMP1/PRDM1 in direct ELISAs and Western blots.
Source	Polyclonal Goat IgG
Purification	Antigen Affinity-purified
Immunogen	<i>E. coli</i> -derived recombinant human BLIMP1/PRDM1 Leu687-Pro789 Accession # AAO45623
Formulation	Lyophilized from a 0.2 µm filtered solution in PBS with Trehalose. See Certificate of Analysis for details. *Small pack size (-SP) is supplied as a 0.2 µm filtered solution in PBS.

APPLICATIONS

Please Note: Optimal dilutions should be determined by each laboratory for each application. *General Protocols* are available in the *Technical Information* section on our website.

	Recommended Concentration	Sample
Western Blot	1 µg/mL	See Below

DATA



PREPARATION AND STORAGE

Reconstitution	Reconstitute at 0.2 mg/mL in sterile PBS.
Shipping	The product is shipped at ambient temperature. Upon receipt, store it immediately at the temperature recommended below. *Small pack size (-SP) is shipped with polar packs. Upon receipt, store it immediately at -20 to -70 °C
Stability & Storage	Use a manual defrost freezer and avoid repeated freeze-thaw cycles. <ul style="list-style-type: none"> ● 12 months from date of receipt, -20 to -70 °C as supplied. ● 1 month, 2 to 8 °C under sterile conditions after reconstitution. ● 6 months, -20 to -70 °C under sterile conditions after reconstitution.

BACKGROUND

BLIMP-1 is a 97 kDa multidomain transcription repressor that has a SET domain in its N-terminal region and four C2H2-type zinc fingers in its C-terminal regions. It promotes terminal differentiation of B cells into plasma cells and also has an important role in primordial germ cell specification. An alternative splice variant that lacks 101 N-terminal amino acid (aa) residues of full-length BLIMP1 has been reported. Over the region used as immunogen, human and mouse BLIMP1 share 89% aa sequence identity.