

DESCRIPTION

Species Reactivity	Human
Specificity	Detects human HES-4 in direct ELISAs and Western blots. In direct ELISAs and Western blots, less than 1% cross-reactivity with recombinant human (rh) HES-1, rhHES-2, rhHES-5, and rhHES-7 is observed.
Source	Polyclonal Sheep IgG
Purification	Antigen Affinity-purified
Immunogen	<i>E. coli</i> -derived recombinant human HES-4 Val94-Arg221 Accession # Q9HCC6
Formulation	Lyophilized from a 0.2 µm filtered solution in PBS with Trehalose. See Certificate of Analysis for details. *Small pack size (-SP) is supplied as a 0.2 µm filtered solution in PBS.

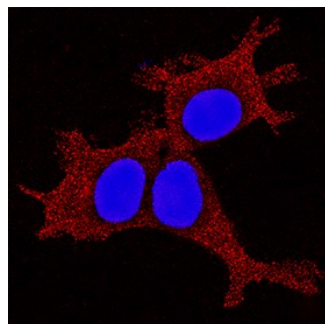
APPLICATIONS

Please Note: Optimal dilutions should be determined by each laboratory for each application. *General Protocols* are available in the *Technical Information* section on our website.

	Recommended Concentration	Sample
Western Blot	0.1 µg/mL	Recombinant Human HES-4
Immunocytochemistry	5-15 µg/mL	See Below

DATA

Immunocytochemistry



HES-4 in HEK293 Human Cell Line.
HES-4 was detected in immersion fixed HEK293 human embryonic kidney cell line using Sheep Anti-Human HES-4 Antigen Affinity-purified Polyclonal Antibody (Catalog # AF3600) at 1.7 µg/mL for 3 hours at room temperature. Cells were stained using the NorthernLights™ 557-conjugated Anti-Sheep IgG Secondary Antibody (red; Catalog # NL010) and counterstained with DAPI (blue). Specific staining was localized to cytoplasm. View our protocol for [Fluorescent ICC Staining of Cells on Coverslips](#).

PREPARATION AND STORAGE

Reconstitution	Reconstitute at 0.2 mg/mL in sterile PBS.
Shipping	The product is shipped at ambient temperature. Upon receipt, store it immediately at the temperature recommended below. *Small pack size (-SP) is shipped with polar packs. Upon receipt, store it immediately at -20 to -70 °C
Stability & Storage	Use a manual defrost freezer and avoid repeated freeze-thaw cycles. <ul style="list-style-type: none"> ● 12 months from date of receipt, -20 to -70 °C as supplied. ● 1 month, 2 to 8 °C under sterile conditions after reconstitution. ● 6 months, -20 to -70 °C under sterile conditions after reconstitution.

BACKGROUND

HES-4 is a 221 aa, 24 kDa member of the HES-family of transcriptional repressors. HES-4 contains a species-specific bHLH domain (aa 33-93), a specific orange DNA-binding domain (aa 109-150), a 65 aa Proline-rich SH3-binding domain, and a WRPW Groucho/TLE interacting C-terminal motif. HES-4 is a HES-1 paralog likely to maintain stem cell pluripotency. In the region used as immunogen, the amino acid sequence of human and canine HES-4 are 80% identical.