

DESCRIPTION

Species Reactivity	Human
Specificity	Detects human Rex-1/ZFP42 in direct ELISAs and Western blots. In direct ELISAs and Western blots, less than 1% cross-reactivity with recombinant human YY1 is observed.
Source	Polyclonal Sheep IgG
Purification	Antigen Affinity-purified
Immunogen	<i>E. coli</i> -derived recombinant human Rex-1/ZFP42 Ser2-Lys150 Accession # NP_777560
Formulation	Lyophilized from a 0.2 µm filtered solution in PBS with Trehalose. See Certificate of Analysis for details. *Small pack size (-SP) is supplied as a 0.2 µm filtered solution in PBS.

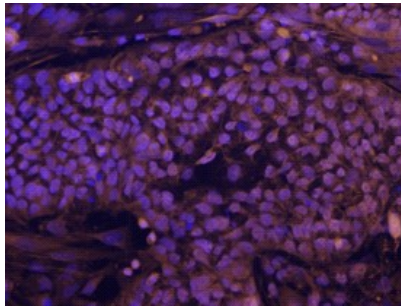
APPLICATIONS

Please Note: Optimal dilutions should be determined by each laboratory for each application. [General Protocols](#) are available in the [Technical Information](#) section on our website.

	Recommended Concentration	Sample
Western Blot	0.1 µg/mL	Recombinant Human Rex-1
Immunocytochemistry	5-15 µg/mL	See Below

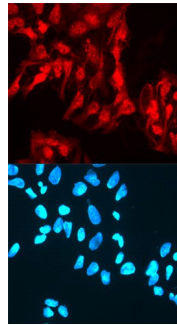
DATA

Immunocytochemistry



Rex-1/ZFP42 in BG01V Human Stem Cells. Rex-1/ZFP42 was detected in immersion fixed BG01V human embryonic stem cells using 10 µg/mL Sheep Anti-Human Rex-1/ZFP42 Antigen Affinity-purified Polyclonal Antibody (Catalog # AF3598) for 3 hours at room temperature. Cells were stained with the NorthernLights™ 557-conjugated Anti-Sheep IgG Secondary Antibody (red; Catalog # NL010) and counterstained with DAPI (blue). View our protocol for [Fluorescent ICC Staining of Cells on Coverslips](#).

Immunocytochemistry



Rex-1/ZFP42 in NTERA-2 Human Cell Line. Rex-1/ZFP42 was detected in immersion fixed NTERA-2 human testicular embryonic carcinoma cell line using Sheep Anti-Human Rex-1/ZFP42 Antigen Affinity-purified Polyclonal Antibody (Catalog # AF3598) at 10 µg/mL for 3 hours at room temperature. Cells were stained using the NorthernLights™ 557-conjugated Anti-Sheep IgG Secondary Antibody (red, upper panel; Catalog # NL010) and counterstained with DAPI (blue, lower panel). Specific staining was localized to nuclei. View our protocol for [Fluorescent ICC Staining of Cells on Coverslips](#).

PREPARATION AND STORAGE

Reconstitution	Reconstitute at 0.2 mg/mL in sterile PBS.
Shipping	The product is shipped at ambient temperature. Upon receipt, store it immediately at the temperature recommended below. *Small pack size (-SP) is shipped with polar packs. Upon receipt, store it immediately at -20 to -70 °C
Stability & Storage	Use a manual defrost freezer and avoid repeated freeze-thaw cycles. <ul style="list-style-type: none"> ● 12 months from date of receipt, -20 to -70 °C as supplied. ● 1 month, 2 to 8 °C under sterile conditions after reconstitution. ● 6 months, -20 to -70 °C under sterile conditions after reconstitution.

BACKGROUND

Rex-1, also named zinc finger protein 42 (Zfp-42), is a 32 kDa transcription factor belonging to the kruppel C2H2-type zinc-finger protein family. It is a putative stem cell marker and is highly expressed in embryonic and adult stem cells. Over the region used for immunization, human and mouse Rex-1 share 47% amino acid sequence identity.