

DESCRIPTION

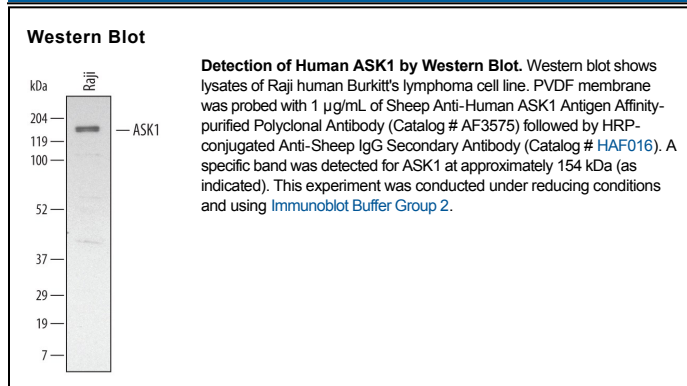
Species Reactivity	Human
Specificity	Detects human ASK1 in direct ELISAs and Western blots.
Source	Polyclonal Sheep IgG
Purification	Antigen Affinity-purified
Immunogen	<i>E. coli</i> -derived recombinant human ASK1 Lys1011-Asp1196 Accession # Q99683
Formulation	Lyophilized from a 0.2 µm filtered solution in PBS with Trehalose. See Certificate of Analysis for details. *Small pack size (-SP) is supplied as a 0.2 µm filtered solution in PBS.

APPLICATIONS

Please Note: Optimal dilutions should be determined by each laboratory for each application. *General Protocols* are available in the *Technical Information* section on our website.

	Recommended Concentration	Sample
Western Blot	1 µg/mL	See Below
Immunocytochemistry	5-15 µg/mL	Immersion fixed human peripheral blood mononuclear cells

DATA



PREPARATION AND STORAGE

Reconstitution	Reconstitute at 0.2 mg/mL in sterile PBS.
Shipping	The product is shipped at ambient temperature. Upon receipt, store it immediately at the temperature recommended below. *Small pack size (-SP) is shipped with polar packs. Upon receipt, store it immediately at -20 to -70 °C
Stability & Storage	Use a manual defrost freezer and avoid repeated freeze-thaw cycles. <ul style="list-style-type: none"> ● 12 months from date of receipt, -20 to -70 °C as supplied. ● 1 month, 2 to 8 °C under sterile conditions after reconstitution. ● 6 months, -20 to -70 °C under sterile conditions after reconstitution.

BACKGROUND

Apoptosis signal-regulating kinase 1 (ASK1) is a MAP kinase kinase kinase also known as MEKK5 and MAP3K5. ASK1 is induced by inflammatory cytokines, UV light, and other stress-related stimuli to phosphorylate MAP kinase kinases that in turn activate the p38 and JNK families of MAP kinases. Mice lacking ASK1 are resistant to stress-induced p38 and JNK activation and cell death.