

DESCRIPTION

Species Reactivity	Mouse
Specificity	Detects mouse Endoglycan/PODXL2 in direct ELISAs and Western blots.
Source	Polyclonal Goat IgG
Purification	Antigen Affinity-purified
Immunogen	Mouse myeloma cell line NS0-derived recombinant mouse Endoglycan/PODXL2 Gly30-Gly498 Accession # Q8CAE9
Formulation	Lyophilized from a 0.2 µm filtered solution in PBS with Trehalose. See Certificate of Analysis for details. *Small pack size (-SP) is supplied either lyophilized or as a 0.2 µm filtered solution in PBS.

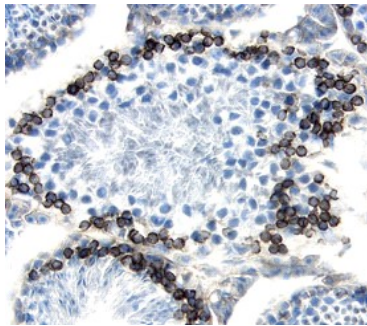
APPLICATIONS

Please Note: Optimal dilutions should be determined by each laboratory for each application. *General Protocols* are available in the *Technical Information* section on our website.

	Recommended Concentration	Sample
Western Blot	0.1 µg/mL	Recombinant Mouse Endoglycan/PODXL2
Flow Cytometry	2.5 µg/10 ⁶ cells	bEnd.3 mouse endothelioma cell line
Immunohistochemistry	5-15 µg/mL	See Below
CyTOF-ready	Ready to be labeled using established conjugation methods. No BSA or other carrier proteins that could interfere with conjugation.	

DATA

Immunohistochemistry



Endoglycan/PODXL2 in Mouse Testis. Endoglycan/PODXL2 was detected in perfusion fixed frozen sections of mouse testis using 1.7 µg/mL Goat Anti-Mouse Endoglycan/PODXL2 Antigen Affinity-purified Polyclonal Antibody (Catalog # AF3534) overnight at 4 °C. Tissue was stained with the Anti-Goat HRP-DAB Cell & Tissue Staining Kit (brown; Catalog # CTS008) and counterstained with hematoxylin (blue). View our protocol for [Chromogenic IHC Staining of Frozen Tissue Sections](#).

PREPARATION AND STORAGE

Reconstitution	Reconstitute at 0.2 mg/mL in sterile PBS.
Shipping	The product is shipped at ambient temperature. Upon receipt, store it immediately at the temperature recommended below. *Small pack size (-SP) is shipped with polar packs. Upon receipt, store it immediately at -20 to -70 °C
Stability & Storage	Use a manual defrost freezer and avoid repeated freeze-thaw cycles. <ul style="list-style-type: none"> ● 12 months from date of receipt, -20 to -70 °C as supplied. ● 1 month, 2 to 8 °C under sterile conditions after reconstitution. ● 6 months, -20 to -70 °C under sterile conditions after reconstitution.

BACKGROUND

Endoglycan, also named podocalyxin-like 2 protein, is a type I transmembrane glycoprotein that belongs to the CD34/podocalyxin family of sialomucins that are expressed on endothelial cells and hematopoietic precursors, vascular smooth muscle cells, and some leukocyte subpopulations. The extracellular domain of Endoglycan contains an N-terminal acidic domain with several polyglutamate tracts, a mucin-like domain and a membrane proximal globular domain. Unlike other sialomucins, Endoglycan contains chondroitin sulfate modifications. Within the extracellular domain, mouse endoglycan shares 73% and 96% amino acid sequence identity with human and rat endoglycan, respectively.