

DESCRIPTION

Species Reactivity	Human
Specificity	Detects human Prohibitin in direct ELISAs and Western blots.
Source	Polyclonal Goat IgG
Purification	Antigen Affinity-purified
Immunogen	<i>E. coli</i> -derived recombinant human Prohibitin Ala2-Gln272 Accession # P35232
Formulation	Lyophilized from a 0.2 µm filtered solution in PBS with Trehalose. See Certificate of Analysis for details. *Small pack size (-SP) is supplied as a 0.2 µm filtered solution in PBS.

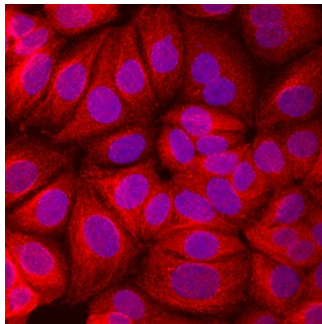
APPLICATIONS

Please Note: Optimal dilutions should be determined by each laboratory for each application. *General Protocols* are available in the *Technical Information* section on our website.

	Recommended Concentration	Sample
Western Blot	0.1 µg/mL	Recombinant Human Prohibitin
Immunocytochemistry	5-15 µg/mL	See Below

DATA

Immunocytochemistry



Prohibitin in MCF-7 Human Cell Line.
Prohibitin was detected in immersion fixed MCF-7 human breast cancer cell line using Goat Anti-Human Prohibitin Antigen Affinity-purified Polyclonal Antibody (Catalog # AF3470) at 10 µg/mL for 3 hours at room temperature. Cells were stained using the NorthernLights™ 557-conjugated Anti-Goat IgG Secondary Antibody (red; Catalog # NL001) and counterstained with DAPI (blue). Specific staining was localized to cytoplasm. View our protocol for [Fluorescent ICC Staining of Cells on Coverslips](#).

PREPARATION AND STORAGE

Reconstitution	Reconstitute at 0.2 mg/mL in sterile PBS.
Shipping	The product is shipped at ambient temperature. Upon receipt, store it immediately at the temperature recommended below. *Small pack size (-SP) is shipped with polar packs. Upon receipt, store it immediately at -20 to -70 °C
Stability & Storage	Use a manual defrost freezer and avoid repeated freeze-thaw cycles. <ul style="list-style-type: none"> ● 12 months from date of receipt, -20 to -70 °C as supplied. ● 1 month, 2 to 8 °C under sterile conditions after reconstitution. ● 6 months, -20 to -70 °C under sterile conditions after reconstitution.

BACKGROUND

Prohibitin is an approximately 30 kDa protein that belongs to the prohibitin family. It contains a characteristic prohibitin domain and has been shown to have multiple functions. It can be localized to the mitochondria, nucleus, plasma membrane, and is also present in circulation. Post translational modifications of Prohibitin, including phosphorylation and ubiquitination, also occurs. Human Prohibitin shares 99% amino acid sequence identity with the mouse or rat protein.