

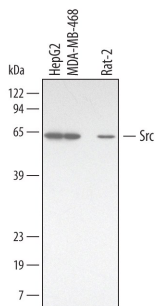
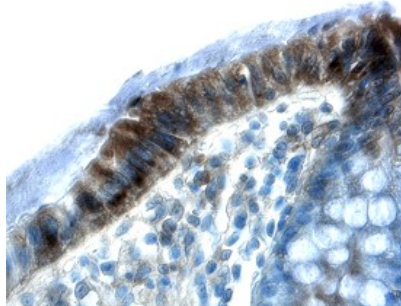
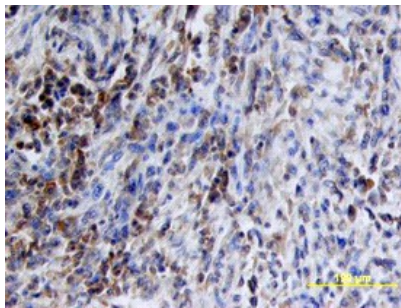
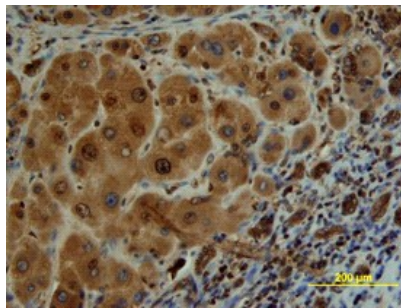
DESCRIPTION	
Species Reactivity	Human/Mouse/Rat
Specificity	Detects endogenous human, mouse, and rat Src in Western blots.
Source	Polyclonal Goat IgG
Purification	Antigen Affinity-purified
Immunogen	<i>E. coli</i> -derived recombinant human Src Met1-Ala79 Accession # P12931
Formulation	Lyophilized from a 0.2 µm filtered solution in PBS with Trehalose. See Certificate of Analysis for details. *Small pack size (-SP) is supplied as a 0.2 µm filtered solution in PBS.

APPLICATIONS

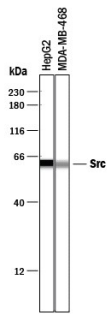
Please Note: Optimal dilutions should be determined by each laboratory for each application. *General Protocols* are available in the *Technical Information* section on our website.

	Recommended Concentration	Sample
Western Blot	0.5 µg/mL	See Below
Immunohistochemistry	5-15 µg/mL	See Below
Simple Western	25 µg/mL	See Below

DATA

<p>Western Blot</p>  <p>Detection of Human and Rat Src by Western Blot. Western blot shows lysates of HepG2 human hepatocellular carcinoma cell line, MBA-MB-468 human breast cancer cell line, and Rat-2 rat embryonic fibroblast cell line. PVDF membrane was probed with 0.5 µg/mL of Human/Mouse/Rat Src Antigen Affinity-purified Polyclonal Antibody (Catalog # AF3389) followed by HRP-conjugated Anti-Goat IgG Secondary Antibody (Catalog # HAF109). A specific band was detected for Src at approximately 60 kDa (as indicated). This experiment was conducted under reducing conditions and using Immunoblot Buffer Group 1.</p>	<p>Immunohistochemistry</p>  <p>Src in Human Colon. Src was detected in immersion fixed paraffin-embedded sections of human colon using 15 µg/mL Human/Mouse/Rat Src Antigen Affinity-purified Polyclonal Antibody (Catalog # AF3389) overnight at 4 °C. Tissue was stained with the Anti-Goat HRP-DAB Cell & Tissue Staining Kit (brown; Catalog # CTS008) and counterstained with hematoxylin (blue). View our protocol for Chromogenic IHC Staining of Paraffin-embedded Tissue Sections.</p>
<p>Immunohistochemistry</p>  <p>Src in Human Liver Cancer Tissue. Src was detected in immersion fixed paraffin-embedded sections of human liver cancer tissue using Human/Mouse/Rat Src Antigen Affinity-purified Polyclonal Antibody (Catalog # AF3389) at 15 µg/mL overnight at 4 °C. Tissue was stained using the Anti-Goat HRP-DAB Cell & Tissue Staining Kit (brown; Catalog # CTS008) and counterstained with hematoxylin (blue). View our protocol for Chromogenic IHC Staining of Paraffin-embedded Tissue Sections.</p>	<p>Immunohistochemistry</p>  <p>Src in Human Liver. Src was detected in immersion fixed paraffin-embedded sections of human liver array using Human/Mouse/Rat Src Antigen Affinity-purified Polyclonal Antibody (Catalog # AF3389) at 10 µg/mL overnight at 4 °C. Tissue was stained using the Anti-Goat HRP-DAB Cell & Tissue Staining Kit (brown; Catalog # CTS008) and counterstained with hematoxylin (blue). View our protocol for Chromogenic IHC Staining of Paraffin-embedded Tissue Sections.</p>

Simple Western



Detection of Human Src by Simple Western™. Simple Western lane view shows lysates of HepG2 human hepatocellular carcinoma cell line and MDA-MB-468 human breast cancer cell line, loaded at 0.2 mg/mL. A specific band was detected for Src at approximately 62 kDa (as indicated) using 25 µg/mL of Goat Anti-Human/Mouse/Rat Src Antigen Affinity-purified Polyclonal Antibody (Catalog # AF3389) followed by 1:50 dilution of HRP-conjugated Anti-Goat IgG Secondary Antibody (Catalog # HAF109). This experiment was conducted under reducing conditions and using the 12-230 kDa separation system.

PREPARATION AND STORAGE

Reconstitution	Reconstitute at 0.2 mg/mL in sterile PBS.
Shipping	The product is shipped at ambient temperature. Upon receipt, store it immediately at the temperature recommended below. *Small pack size (-SP) is shipped with polar packs. Upon receipt, store it immediately at -20 to -70 °C
Stability & Storage	<p>Use a manual defrost freezer and avoid repeated freeze-thaw cycles.</p> <ul style="list-style-type: none"> ● 12 months from date of receipt, -20 to -70 °C as supplied. ● 1 month, 2 to 8 °C under sterile conditions after reconstitution. ● 6 months, -20 to -70 °C under sterile conditions after reconstitution.

BACKGROUND

The Src family of proteins are intracellular tyrosine kinases involved in cell proliferation, differentiation, motility, and survival. Src family activity is regulated by tyrosine phosphorylation at two sites with opposing effects. Autophosphorylation in the activation loop of the kinase domain (Y419 of human Src) up-regulates the enzyme, while phosphorylation in the C-terminal tail (Y530 of human Src) down-regulates activity.