

DESCRIPTION

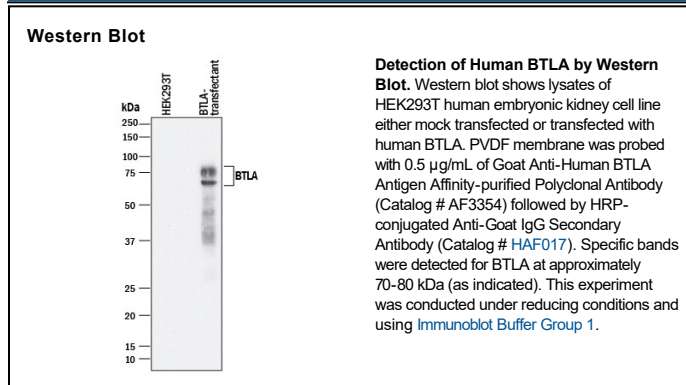
Species Reactivity	Human
Specificity	Detects human BTLA in direct ELISAs and Western blots.
Source	Polyclonal Goat IgG
Purification	Antigen Affinity-purified
Immunogen	Mouse myeloma cell line NS0-derived recombinant human BTLA Ile25-Ser150 Accession # AAP44003
Formulation	Lyophilized from a 0.2 µm filtered solution in PBS with Trehalose. See Certificate of Analysis for details. *Small pack size (-SP) is supplied either lyophilized or as a 0.2 µm filtered solution in PBS.

APPLICATIONS

Please Note: Optimal dilutions should be determined by each laboratory for each application. *General Protocols* are available in the *Technical Information* section on our website.

	Recommended Concentration	Sample
Western Blot	0.5 µg/mL	See Below
Flow Cytometry	0.25 µg/10 ⁶ cells	Human whole blood lymphocytes
CyTOF-ready	Ready to be labeled using established conjugation methods. No BSA or other carrier proteins that could interfere with conjugation.	

DATA



PREPARATION AND STORAGE

Reconstitution	Reconstitute at 0.2 mg/mL in sterile PBS.
Shipping	The product is shipped at ambient temperature. Upon receipt, store it immediately at the temperature recommended below. *Small pack size (-SP) is shipped with polar packs. Upon receipt, store it immediately at -20 to -70 °C
Stability & Storage	<p>Use a manual defrost freezer and avoid repeated freeze-thaw cycles.</p> <ul style="list-style-type: none"> ● 12 months from date of receipt, -20 to -70 °C as supplied. ● 1 month, 2 to 8 °C under sterile conditions after reconstitution. ● 6 months, -20 to -70 °C under sterile conditions after reconstitution.

BACKGROUND

B and T Lymphocyte Attenuator (BTLA) also known as CD272, is a 70kDa type I transmembrane glycoprotein of the CD28 family of T cell costimulatory molecules. BTLA functions as a coinhibitor on activated T cells and on B cells and dendritic cells. The extracellular domain (ECD) of this Ig superfamily protein contains one V-type Ig-like domain, which interacts with the herpesvirus entry mediator (HVEM/TNFSF14). The amino acid sequence of the ECD of human BTLA shares only 34% identity to that of mouse BTLA. One human BTLA variant lacking the transmembrane sequence has been reported.