

DESCRIPTION

Species Reactivity	Human
Specificity	Detects human Complement C1qC in direct ELISAs and Western blots. In direct ELISAs and Western blots, less than 1% cross-reactivity with recombinant human (rh) C1qA and rhC1qB is observed.
Source	Polyclonal Goat IgG
Purification	Antigen Affinity-purified
Immunogen	<i>E. coli</i> -derived recombinant human C1qC Lys115-Asp245 Accession # P02747
Formulation	Lyophilized from a 0.2 µm filtered solution in PBS with Trehalose. See Certificate of Analysis for details. *Small pack size (-SP) is supplied as a 0.2 µm filtered solution in PBS.

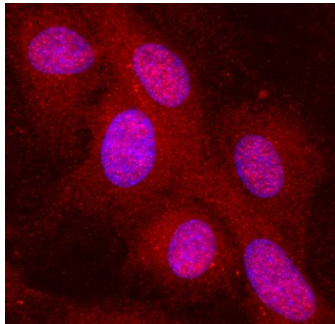
APPLICATIONS

Please Note: Optimal dilutions should be determined by each laboratory for each application. *General Protocols* are available in the *Technical Information* section on our website.

	Recommended Concentration	Sample
Western Blot	0.1 µg/mL	Recombinant Human Complement Component C1qC
Immunocytochemistry	5-15 µg/mL	See Below

DATA

Immunocytochemistry



Complement Component C1qC in Human HUVEC. Complement Component C1qC was detected in immersion fixed HUVEC human umbilical vein endothelial cells using Goat Anti-Human Complement Component C1qC Antigen Affinity-purified Polyclonal Antibody (Catalog # AF3337) at 10 µg/mL for 3 hours at room temperature. Cells were stained using the NorthernLights™ 557-conjugated Anti-Goat IgG Secondary Antibody (red; Catalog # NL001) and counterstained with DAPI (blue). Specific staining was localized to cytoplasm. View our protocol for [Fluorescent ICC Staining of Cells on Coverslips](#).

PREPARATION AND STORAGE

Reconstitution	Reconstitute at 0.2 mg/mL in sterile PBS.
Shipping	The product is shipped at ambient temperature. Upon receipt, store it immediately at the temperature recommended below. *Small pack size (-SP) is shipped with polar packs. Upon receipt, store it immediately at -20 to -70 °C
Stability & Storage	Use a manual defrost freezer and avoid repeated freeze-thaw cycles. <ul style="list-style-type: none"> ● 12 months from date of receipt, -20 to -70 °C as supplied. ● 1 month, 2 to 8 °C under sterile conditions after reconstitution. ● 6 months, -20 to -70 °C under sterile conditions after reconstitution.

BACKGROUND

C1qC is a globular secreted protein and is a subunit of complement component C1q. C1q is composed of 18 polypeptide chains of three distinct subtypes (C1qA, C1qB and C1qC) arranged as 6 disulfide-linked A-B heterodimers and 3 disulfide-linked C-C homodomers. All C1q subunits contain a C1q globular domain and one collagen-like domain. C1q is a subcomponent of complement C1 complex which comprises one C1q and the Ca²⁺-dependent serine protease tetramer C1r₂-C1s₂. C1 complex triggers the classical complement pathway. Within the C1q domain, human C1qC shares approximately 75% amino acid sequence identity with mouse and rat C1qC.