

## DESCRIPTION

<b>Species Reactivity</b>	Human
<b>Specificity</b>	Detects human Musashi-2 in direct ELISAs and Western blots. In direct ELISAs and Western blots, approximately 5% cross-reactivity with recombinant human Musashi-1 is observed.
<b>Source</b>	Polyclonal Goat IgG
<b>Purification</b>	Antigen Affinity-purified
<b>Immunogen</b>	<i>E. coli</i> -derived recombinant human Musashi-2 isoform 1 Met1-His328 Accession # Q96DH6
<b>Formulation</b>	Lyophilized from a 0.2 µm filtered solution in PBS with Trehalose. See Certificate of Analysis for details. *Small pack size (-SP) is supplied as a 0.2 µm filtered solution in PBS.

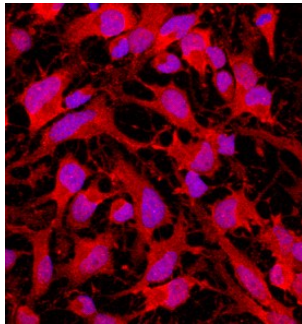
## APPLICATIONS

**Please Note:** Optimal dilutions should be determined by each laboratory for each application. *General Protocols* are available in the *Technical Information* section on our website.

	<b>Recommended Concentration</b>	<b>Sample</b>
<b>Western Blot</b>	0.1 µg/mL	Recombinant Human Musashi-2
<b>Immunocytochemistry</b>	5-15 µg/mL	See Below

## DATA

### Immunocytochemistry



**Musashi-2 in Rat Cortical Stem Cells.**  
Musashi-2 was detected in immersion fixed undifferentiated rat cortical stem cells using Goat Anti-Human Musashi-2 Antigen Affinity-purified Polyclonal Antibody (Catalog # AF3255) at 10 µg/mL for 3 hours at room temperature. Cells were stained using the NorthernLights™ 557-conjugated Anti-Goat IgG Secondary Antibody (red; Catalog # NL001) and counter-stained with DAPI (blue). Specific staining was localized to cytoplasm. View our protocol for [Fluorescent ICC Staining of Cells on Coverslips](#).

## PREPARATION AND STORAGE

<b>Reconstitution</b>	Reconstitute at 0.2 mg/mL in sterile PBS.
<b>Shipping</b>	The product is shipped at ambient temperature. Upon receipt, store it immediately at the temperature recommended below. *Small pack size (-SP) is shipped with polar packs. Upon receipt, store it immediately at -20 to -70 °C
<b>Stability &amp; Storage</b>	<b>Use a manual defrost freezer and avoid repeated freeze-thaw cycles.</b> <ul style="list-style-type: none"> <li>● 12 months from date of receipt, -20 to -70 °C as supplied.</li> <li>● 1 month, 2 to 8 °C under sterile conditions after reconstitution.</li> <li>● 6 months, -20 to -70 °C under sterile conditions after reconstitution.</li> </ul>

## BACKGROUND

Musashi-2 belongs to the evolutionarily conserved Musashi family of RNA binding proteins which are involved in the translational control of their target mRNAs. Musashi-2 has two tandem RNA-recognition domains (RRM-1 and RRM-2) that have the highly conserved RNP (ribonucleoprotein) motifs. By alternative splicing, at least three Musashi-2 isoforms exist. In mammalian nervous system, Musashi-1 and -2 are selectively expressed in neural progenitor cells and play important roles in maintenance of the stem cell fate. Human Musashi-2 shares 95% amino acid sequence homology with mouse Musashi-2 and 80% amino acid sequence identity with human Musashi-1. Translocations resulting in the formation of Musashi-2/HOXA9 fusion protein is associated with progression of chronic myelogenous leukemia to the accelerated phase and blast crisis.