

## DESCRIPTION

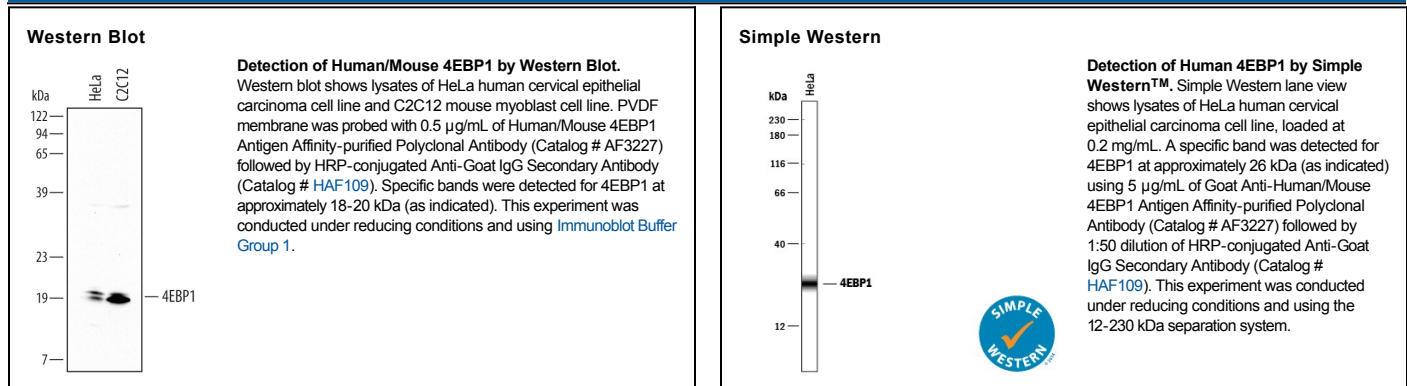
<b>Species Reactivity</b>	Human/Mouse
<b>Specificity</b>	Detects human and mouse 4EBP1.
<b>Source</b>	Polyclonal Goat IgG
<b>Purification</b>	Antigen Affinity-purified
<b>Immunogen</b>	<i>E. coli</i> -derived recombinant human 4EBP1 Ser2-Ile118 Accession # Q13541
<b>Formulation</b>	Lyophilized from a 0.2 µm filtered solution in PBS with Trehalose. See Certificate of Analysis for details. *Small pack size (-SP) is supplied as a 0.2 µm filtered solution in PBS.

## APPLICATIONS

**Please Note:** Optimal dilutions should be determined by each laboratory for each application. *General Protocols* are available in the *Technical Information* section on our website.

	Recommended Concentration	Sample
<b>Western Blot</b>	0.5 µg/mL	See Below
<b>Simple Western</b>	5 µg/mL	See Below

## DATA



## PREPARATION AND STORAGE

<b>Reconstitution</b>	Reconstitute at 0.2 mg/mL in sterile PBS.
<b>Shipping</b>	The product is shipped at ambient temperature. Upon receipt, store it immediately at the temperature recommended below. *Small pack size (-SP) is shipped with polar packs. Upon receipt, store it immediately at -20 to -70 °C
<b>Stability &amp; Storage</b>	<b>Use a manual defrost freezer and avoid repeated freeze-thaw cycles.</b> <ul style="list-style-type: none"> <li>● 12 months from date of receipt, -20 to -70 °C as supplied.</li> <li>● 1 month, 2 to 8 °C under sterile conditions after reconstitution.</li> <li>● 6 months, -20 to -70 °C under sterile conditions after reconstitution.</li> </ul>

## BACKGROUND

The eukaryotic initiation factor 4E (eIF-4E) binding protein 1 (4EBP1) binds to eIF-4E to prevent translation initiation. Upon phosphorylation by the target of rapamycin (TOR) kinase, 4EBP1 releases eIF-4E and translation initiation ensues. 4EBP1 is also known as PHAS-1 (phosphorylated heat and acid stable protein regulated by insulin 1).