

## DESCRIPTION

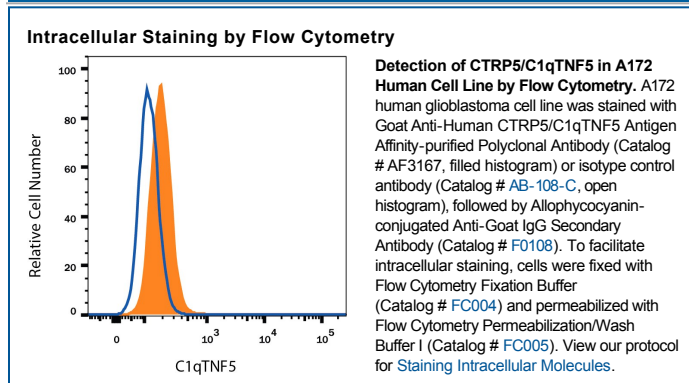
|                           |   |
|---------------------------|---|
| <b>Species Reactivity</b> | Human   |
| <b>Specificity</b>        | Detects human CTRP5/C1qTNF5 in direct ELISAs and Western blots. In direct ELISAs, less than 5% cross-reactivity with recombinant human CTRP4 is observed.                               |
| <b>Source</b>             | Polyclonal Goat IgG   |
| <b>Purification</b>       | Antigen Affinity-purified   |
| <b>Immunogen</b>          | Mouse myeloma cell line NS0-derived recombinant human CTRP5/C1qTNF5<br>Ser16-Ala243<br>Accession # AAH29485   |
| <b>Formulation</b>        | Lyophilized from a 0.2 µm filtered solution in PBS with Trehalose. See Certificate of Analysis for details.<br>*Small pack size (-SP) is supplied as a 0.2 µm filtered solution in PBS. |

## APPLICATIONS

**Please Note:** Optimal dilutions should be determined by each laboratory for each application. *General Protocols* are available in the *Technical Information* section on our website.

|   | <b>Recommended Concentration</b>   | <b>Sample</b>                   |
|---|--|---------------------------------|
| <b>Western Blot</b>                             | 0.1 µg/mL  | Recombinant Human CTRP5/C1qTNF5 |
| <b>Intracellular Staining by Flow Cytometry</b> | 0.25 µg/mL   | See Below                       |
| <b>CyTOF-ready</b>                              | Ready to be labeled using established conjugation methods. No BSA or other carrier proteins that could interfere with conjugation. |                                 |

## DATA



## PREPARATION AND STORAGE

|                                |  |
|--------------------------------|--|
| <b>Reconstitution</b>          | Reconstitute at 0.2 mg/mL in sterile PBS.  |
| <b>Shipping</b>                | The product is shipped at ambient temperature. Upon receipt, store it immediately at the temperature recommended below.<br>*Small pack size (-SP) is shipped with polar packs. Upon receipt, store it immediately at -20 to -70 °C   |
| <b>Stability &amp; Storage</b> | <b>Use a manual defrost freezer and avoid repeated freeze-thaw cycles.</b> <ul style="list-style-type: none"> <li>● 12 months from date of receipt, -20 to -70 °C as supplied.</li> <li>● 1 month, 2 to 8 °C under sterile conditions after reconstitution.</li> <li>● 6 months, -20 to -70 °C under sterile conditions after reconstitution.</li> </ul> |

## BACKGROUND

C1qTNF5, also known as CTRP5, is a secreted protein that belongs to the highly conserved family of Acrp30/Adiponectin paralogs known as C1q and TNF-related protein family. All family members share a modular organization comprising an N-terminal signal peptide, a short variable region, a collagenous domain and a C-terminal globular domain. C1qTNF proteins are predicted to have trimeric structures that assemble into hexameric and higher order molecular forms. Human and mouse C1qTNF5 share 94% amino acid sequence identity.