

## DESCRIPTION

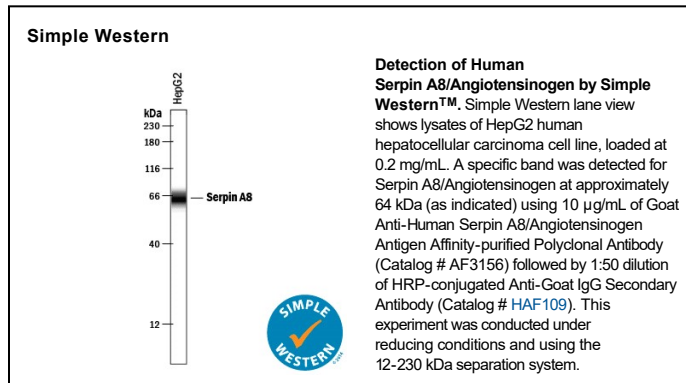
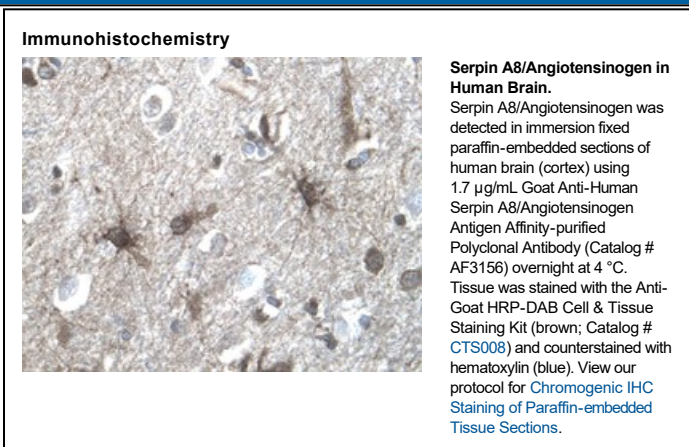
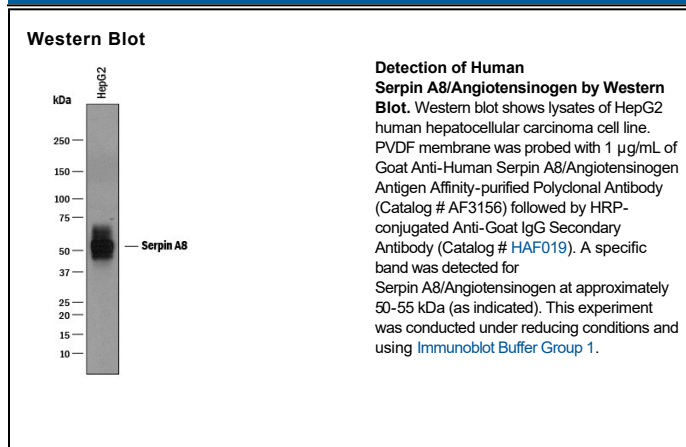
<b>Species Reactivity</b>	Human
<b>Specificity</b>	Detects human Serpin A8/Angiotensinogen in direct ELISAs and Western blots. In direct ELISAs, approximately 20% cross-reactivity with recombinant mouse Serpin A8/Angiotensinogen is observed, and less than 5% cross-reactivity with recombinant human Serpin A1, A4, A5, F2, G1, I1, and I2 is observed.
<b>Source</b>	Polyclonal Goat IgG
<b>Purification</b>	Antigen Affinity-purified
<b>Immunogen</b>	Mouse myeloma cell line NS0-derived recombinant human Serpin A8/Angiotensinogen Asp34-Ala485 Accession # ABM85122
<b>Formulation</b>	Lyophilized from a 0.2 µm filtered solution in PBS with Trehalose. See Certificate of Analysis for details. *Small pack size (-SP) is supplied either lyophilized or as a 0.2 µm filtered solution in PBS.

## APPLICATIONS

**Please Note:** Optimal dilutions should be determined by each laboratory for each application. *General Protocols* are available in the *Technical Information* section on our website.

	Recommended Concentration	Sample
<b>Western Blot</b>	1 µg/mL	See Below
<b>Immunohistochemistry</b>	2-15 µg/mL	See Below
<b>Simple Western</b>	10 µg/mL	See Below

## DATA



## PREPARATION AND STORAGE

<b>Reconstitution</b>	Reconstitute at 0.2 mg/mL in sterile PBS.
<b>Shipping</b>	The product is shipped at ambient temperature. Upon receipt, store it immediately at the temperature recommended below. *Small pack size (-SP) is shipped with polar packs. Upon receipt, store it immediately at -20 to -70 °C
<b>Stability &amp; Storage</b>	<b>Use a manual defrost freezer and avoid repeated freeze-thaw cycles.</b> <ul style="list-style-type: none"> <li>• 12 months from date of receipt, -20 to -70 °C as supplied.</li> <li>• 1 month, 2 to 8 °C under sterile conditions after reconstitution.</li> <li>• 6 months, -20 to -70 °C under sterile conditions after reconstitution.</li> </ul>

## BACKGROUND

Serpin A8 (serine proteinase inhibitor-clade A #8; also angiotensinogen/ANGT) is a secreted, 52-62 kDa glycoprotein member of the clade F-subfamily, serpin superfamily of protease inhibitors. It is expressed by neurons and hepatocytes, and undergoes extracellular cleavage by renin to create a ten amino acid (aa) peptide termed Ang/angiotensin I. This inactive peptide is further cleaved by ACE on the endothelial cell membrane to create bioactive Ang II. Ang II induces vasoconstriction and aldosterone release. Mature human angiotensinogen is 452 aa in length (aa 34-485). It contains Ang I (aa 34-43) that is cleaved to create Ang II (aa 34-41). Angiotensinogen may circulate in a 200 kDa complex with major basic protein (MBP), or as part of a larger 300 kDa complex with MBP and complement C3dg. Over aa 34-485, human serpin A8 shares 61% aa identity with mouse serpin A8.