

DESCRIPTION

Species Reactivity	Human
Specificity	Detects human Frizzled-6 in direct ELISAs and Western blots.
Source	Polyclonal Goat IgG
Purification	Antigen Affinity-purified
Immunogen	Mouse myeloma cell line NS0-derived recombinant human Frizzled-6 His19-Val153 Accession # O60353
Formulation	Lyophilized from a 0.2 µm filtered solution in PBS with Trehalose. See Certificate of Analysis for details. *Small pack size (-SP) is supplied either lyophilized or as a 0.2 µm filtered solution in PBS.

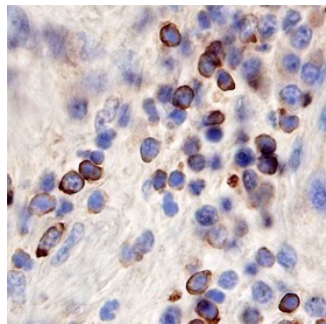
APPLICATIONS

Please Note: Optimal dilutions should be determined by each laboratory for each application. [General Protocols](#) are available in the Technical Information section on our website.

	Recommended Concentration	Sample
Western Blot	0.1 µg/mL	Recombinant Human Frizzled-6
Flow Cytometry	2.5 µg/10 ⁶ cells	HEK293 human embryonic kidney cell line
Immunohistochemistry	5-15 µg/mL	See Below
CyTOF-ready	Ready to be labeled using established conjugation methods. No BSA or other carrier proteins that could interfere with conjugation.	

DATA

Immunohistochemistry



Frizzled-6 in Human Kidney Cancer Tissue. Frizzled-6 was detected in immersion fixed paraffin-embedded sections of human kidney cancer tissue using Goat Anti-Human Frizzled-6 Antigen Affinity-purified Polyclonal Antibody (Catalog # AF3149) at 10 µg/mL overnight at 4 °C. Before incubation with the primary antibody, tissue was subjected to heat-induced epitope retrieval using Antigen Retrieval Reagent-Basic (Catalog # CTS013). Tissue was stained using the Anti-Goat HRP-DAB Cell & Tissue Staining Kit (brown; (Catalog # CTS008) and counterstained with hematoxylin (blue). Specific staining was localized to cell membranes. View our protocol for [Chromogenic IHC Staining of Paraffin-embedded Tissue Sections](#).

PREPARATION AND STORAGE

Reconstitution	Reconstitute at 0.2 mg/mL in sterile PBS.
Shipping	The product is shipped at ambient temperature. Upon receipt, store it immediately at the temperature recommended below. *Small pack size (-SP) is shipped with polar packs. Upon receipt, store it immediately at -20 to -70 °C
Stability & Storage	Use a manual defrost freezer and avoid repeated freeze-thaw cycles. <ul style="list-style-type: none"> 12 months from date of receipt, -20 to -70 °C as supplied. 1 month, 2 to 8 °C under sterile conditions after reconstitution. 6 months, -20 to -70 °C under sterile conditions after reconstitution.

BACKGROUND

Frizzled-6 is a member of the Frizzled/Smoothed family of G-protein coupled receptors that mediate the Wnt beta-Catenin signaling pathway.