

## DESCRIPTION

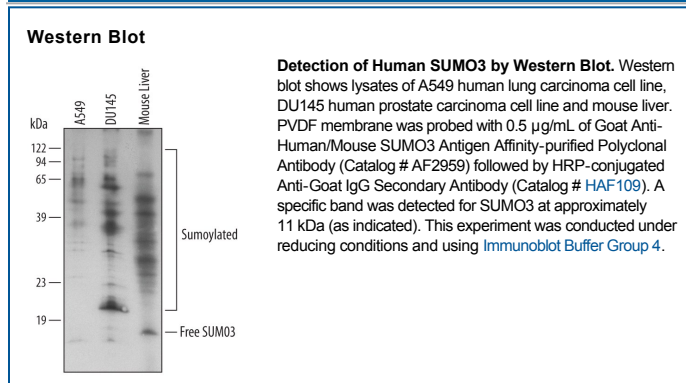
<b>Species Reactivity</b>	Human/Mouse
<b>Specificity</b>	Detects endogenous human and mouse proteins modified with SUMO3 in Western blots. In Western blots, less than 10% cross-reactivity with recombinant human SUMO2 and SUMO4 is observed, and less than 1% cross-reactivity with SUMO1 is observed.
<b>Source</b>	Polyclonal Goat IgG
<b>Purification</b>	Antigen Affinity-purified
<b>Immunogen</b>	<i>E. coli</i> -derived recombinant human SUMO3 Met1-Phe103 Accession # P55854
<b>Formulation</b>	Lyophilized from a 0.2 µm filtered solution in PBS with Trehalose. See Certificate of Analysis for details. *Small pack size (-SP) is supplied either lyophilized or as a 0.2 µm filtered solution in PBS.

## APPLICATIONS

**Please Note:** Optimal dilutions should be determined by each laboratory for each application. *General Protocols* are available in the *Technical Information* section on our website.

	Recommended Concentration	Sample
<b>Western Blot</b>	0.5 µg/mL	See Below

## DATA



## PREPARATION AND STORAGE

<b>Reconstitution</b>	Reconstitute at 0.2 mg/mL in sterile PBS.
<b>Shipping</b>	The product is shipped at ambient temperature. Upon receipt, store it immediately at the temperature recommended below. *Small pack size (-SP) is shipped with polar packs. Upon receipt, store it immediately at -20 to -70 °C
<b>Stability &amp; Storage</b>	<b>Use a manual defrost freezer and avoid repeated freeze-thaw cycles.</b> <ul style="list-style-type: none"> <li>● 12 months from date of receipt, -20 to -70 °C as supplied.</li> <li>● 1 month, 2 to 8 °C under sterile conditions after reconstitution.</li> <li>● 6 months, -20 to -70 °C under sterile conditions after reconstitution.</li> </ul>

## BACKGROUND

Small Ubiquitin-like Modifiers (SUMOs) are a family of small, related proteins that can be enzymatically attached to a target protein by a post-translational modification process termed sumoylation. Unlike ubiquitination, which targets proteins for degradation, sumoylation participates in a number of cellular processes, such as nuclear transport, transcriptional regulation, apoptosis, and protein stability. All SUMO proteins share the conserved ubiquitin domain and the C-terminal diglycine cleavage/attachment site. Human SUMO3, also known as SMT3A, is synthesized as a 103 amino acid (aa), 11.5 kDa propeptide that contains an 11 aa C-terminal prosegment. Following prosegment cleavage, the C-terminal glycine is enzymatically attached to a lysine on a target protein. Human SUMO3 shares 83% sequence identity with SUMO3 from mouse. SUMO3 also has very high sequence homology to SUMO2 and SUMO4, 87% and 75%, respectively. SUMO3 shares only 47% sequence identity to SUMO1.