

DESCRIPTION

Species Reactivity	Human
Specificity	Detects human Syndecan-4 in direct ELISAs and Western blots. In direct ELISAs, approximately 50% cross-reactivity with recombinant mouse Syndecan-4 is observed.
Source	Polyclonal Goat IgG
Purification	Antigen Affinity-purified
Immunogen	Mouse myeloma cell line NS0-derived recombinant human Syndecan-4 Glu19-Glu145 Accession # P31431
Formulation	Lyophilized from a 0.2 µm filtered solution in PBS with Trehalose. See Certificate of Analysis for details. *Small pack size (-SP) is supplied either lyophilized or as a 0.2 µm filtered solution in PBS.

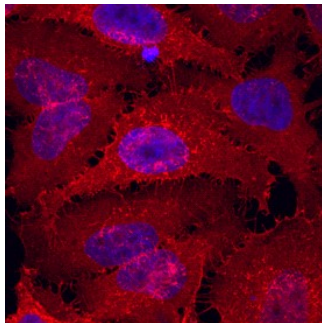
APPLICATIONS

Please Note: Optimal dilutions should be determined by each laboratory for each application. [General Protocols](#) are available in the [Technical Information](#) section on our website.

	Recommended Concentration	Sample
Western Blot	0.1 µg/mL	Recombinant Human Syndecan-4 (Catalog # 2918-SD)
Flow Cytometry	0.25 µg/10 ⁶ cells	HeLa human cervical epithelial carcinoma cell line
Immunocytochemistry	5-15 µg/mL	See Below
CyTOF-ready	Ready to be labeled using established conjugation methods. No BSA or other carrier proteins that could interfere with conjugation.	

DATA

Immunocytochemistry



Syndecan-4 in HeLa Human Cervical Epithelial Carcinoma Cell Line.
Syndecan-4 was detected in immersion fixed HeLa human cervical epithelial carcinoma cell line using Goat Anti-Human Syndecan-4 Antigen Affinity-purified Polyclonal Antibody (Catalog # AF2918) at 10 µg/mL for 3 hours at room temperature. Cells were stained using the NorthernLights™ 557-conjugated Anti-Goat IgG Secondary Antibody (red; Catalog # NL001) and counterstained with DAPI (blue). Specific staining was localized to cytoplasm. View our protocol for [Fluorescent ICC Staining of Cells on Coverslips](#).

PREPARATION AND STORAGE

Reconstitution	Reconstitute at 0.2 mg/mL in sterile PBS.
Shipping	The product is shipped at ambient temperature. Upon receipt, store it immediately at the temperature recommended below. *Small pack size (-SP) is shipped with polar packs. Upon receipt, store it immediately at -20 to -70 °C
Stability & Storage	Use a manual defrost freezer and avoid repeated freeze-thaw cycles. <ul style="list-style-type: none"> ● 12 months from date of receipt, -20 to -70 °C as supplied. ● 1 month, 2 to 8 °C under sterile conditions after reconstitution. ● 6 months, -20 to -70 °C under sterile conditions after reconstitution.

BACKGROUND

Syndecan-4, previously known as amphiglycan or ryudocan, is a member of the syndecan family of Type 1 transmembrane proteins capable of carrying heparan sulfate (HS) and chondroitin sulfate glycosaminoglycans. The four vertebrate syndecans have two conserved cytoplasmic domains and divergent extracellular portions, except for HS attachment sites. Syndecan-4 is the most similar to Syndecan-2, but is more universally expressed and is found in virtually every cell type. Expression can be upregulated by TGF- β 2 and in response to mechanical stress in smooth muscle, wound healing, arterial injury or acute myocardial infarction, probably in response to at least one inflammatory mediator (1, 2). Human Syndecan-4 is synthesized as a 198 amino acid (aa) core protein with an 18 aa signal sequence, a 127 aa extracellular domain containing three consensus Ser-Gly sequences for the attachment of HS side chains, a 25 aa transmembrane region and a 28 aa cytoplasmic tail (3). Human Syndecan-4 ECD shares approximately 79%, 78% and 81% aa identity with mouse, rat and porcine Syndecan-4 ECD, respectively. Addition of 20-80 disaccharides per side chain adds considerably to the size of the 20 kDa core protein. Non-covalent homodimerization of Syndecan-4 is dependent on the transmembrane domain (4). The HS chains can bind fibronectin, SDF-1, antithrombin, FGF-2, midkine and tissue factor pathway inhibitor and can present FGF-2 to its receptors (1, 2, 5). Proteolytic cleavage by plasmin, thrombin or a metalloproteinase may create a functional ectodomain (6-8). Genetic disruption of the Syndecan-4 gene causes a mild phenotype, presumably due to compensation by other syndecans, but mice have an increase in placental thrombi as well as defects in wound healing and response to endotoxin shock (9, 10).

References:

1. Tkachenko, E. *et al.* (2005) *Circ. Res.* **96**:488.
2. Oh, E.-S, and J. R. Couchman (2004) *Mol. Cells* **17**:181.
3. David, G. *et al.* (1992) *J. Cell Biol.* **118**:961.
4. Choi, S. *et al.* (2005) *J. Biol. Chem.* **280**:42573.
5. Charnaux, N. *et al.* (2005) *FEBS J.* **272**:1937.
6. Schmidt, A. *et al.*, *J. Biol. Chem.* **280**:34441.
7. Rauch, B. H. *et al.* (2005) *J. Biol. Chem.* **280**:17507.
8. Fitzgerald, M. L. *et al.* (2000) *J. Cell Biol.* **148**:811.
9. Ishiguro, K. *et al.* (2003) *Glycoconj. J.* **19**:315.
10. Echtermeyer, F. *et al.* (2001) *J. Clin. Invest.* **107**:R9.