

DESCRIPTION

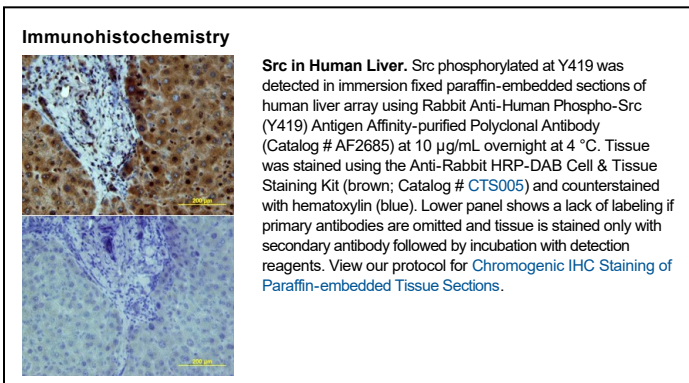
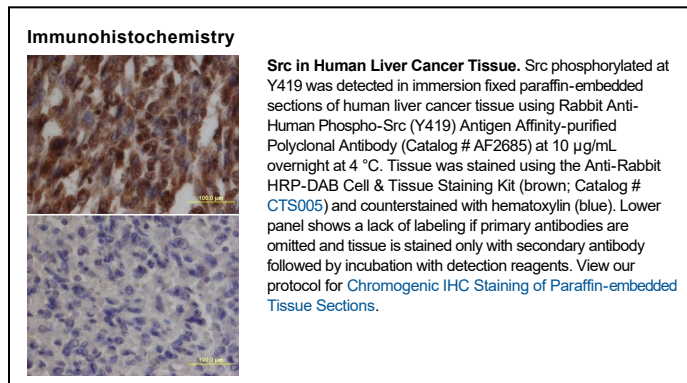
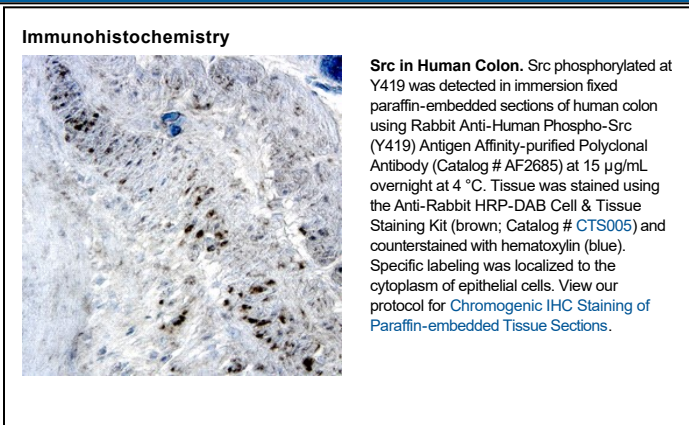
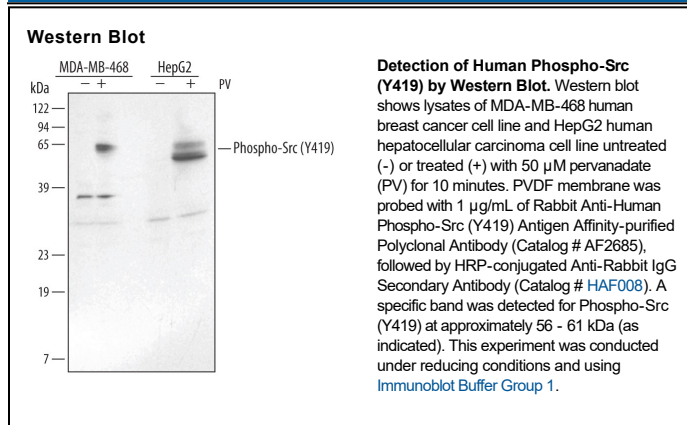
Species Reactivity	Human
Specificity	Detects human Src family members when phosphorylated at sites corresponding to Y419 of human Src in Western blots.
Source	Polyclonal Rabbit IgG
Purification	Antigen Affinity-purified
Immunogen	Phosphopeptide containing human Src Y419 site
Formulation	Lyophilized from a 0.2 µm filtered solution in PBS with Trehalose. See Certificate of Analysis for details. *Small pack size (-SP) is supplied either lyophilized or as a 0.2 µm filtered solution in PBS.

APPLICATIONS

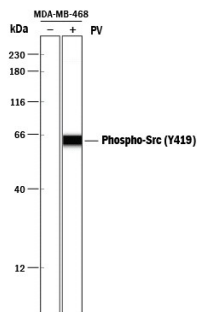
Please Note: Optimal dilutions should be determined by each laboratory for each application. *General Protocols* are available in the *Technical Information* section on our website.

	Recommended Concentration	Sample
Western Blot	1 µg/mL	See Below
Immunohistochemistry	5-15 µg/mL	See Below
Simple Western	10 µg/mL	See Below

DATA



Simple Western



Detection of Human Phospho-Src (Y419) by Simple Western™. Simple Western lane view shows lysates of MDA-MB-468 human breast cancer cell line untreated (-) or treated (+) with 50 μ M Pervanadate (PV) for 10 minutes, loaded at 0.2 mg/mL. A specific band was detected for Phospho-Src (Y419) at approximately 64 kDa (as indicated) using 10 μ g/mL of Rabbit Anti-Human Phospho-Src (Y419) Antigen Affinity-purified Polyclonal Antibody (Catalog # AF2685). This experiment was conducted under reducing conditions and using the 12-230 kDa separation system.

PREPARATION AND STORAGE

Reconstitution Reconstitute at 0.2 mg/mL in sterile PBS.

Shipping The product is shipped at ambient temperature. Upon receipt, store it immediately at the temperature recommended below.
*Small pack size (-SP) is shipped with polar packs. Upon receipt, store it immediately at -20 to -70 °C

Stability & Storage Use a manual defrost freezer and avoid repeated freeze-thaw cycles.

- 12 months from date of receipt, -20 to -70 °C as supplied.
- 1 month, 2 to 8 °C under sterile conditions after reconstitution.
- 6 months, -20 to -70 °C under sterile conditions after reconstitution.

BACKGROUND

Src and other Src family protein tyrosine kinases are proto-oncogenes that play key roles in regulating cell growth and differentiation. Src family activity is regulated by tyrosine phosphorylation at two sites with opposing effects. Phosphorylation at Y419 of human Src up-regulates kinase activity, while phosphorylation at Y530 inactivates Src.