

DESCRIPTION

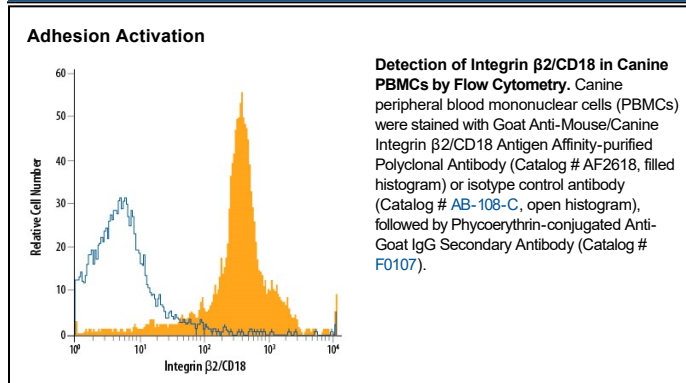
Species Reactivity	Mouse/Canine
Specificity	Detects mouse Integrin β 2 in direct ELISAs and Western blots. In direct ELISAs and Western blots, approximately 30% cross-reactivity with recombinant human Integrin β 2 and recombinant mouse (rm) Integrin β 6 is observed and less than 5% cross-reactivity with rmIntegrin β 1, rmIntegrin β 4, and rmIntegrin β 7 is observed.
Source	Polyclonal Goat IgG
Purification	Antigen Affinity-purified
Immunogen	Chinese hamster ovary cell line CHO-derived recombinant mouse Integrin β 2 Gln24-Asn702 Accession # P11835
Formulation	Lyophilized from a 0.2 μ m filtered solution in PBS with Trehalose. See Certificate of Analysis for details. *Small pack size (-SP) is supplied either lyophilized or as a 0.2 μ m filtered solution in PBS.

APPLICATIONS

Please Note: Optimal dilutions should be determined by each laboratory for each application. *General Protocols* are available in the *Technical Information* section on our website.

	Recommended Concentration	Sample
Western Blot	0.1 μ g/mL	Recombinant Mouse Integrin β 2/CD18
Flow Cytometry	2.5 μ g/ 10^6 cells	Mouse lymph node cells and canine peripheral blood mononuclear cells (PBMCs)
CyTOF-ready	Ready to be labeled using established conjugation methods. No BSA or other carrier proteins that could interfere with conjugation.	
Adhesion Activation	The adhesion of CD3 ⁺ purified mouse T cells to immobilized Recombinant Mouse ICAM-1 Fc Chimera (Catalog # 796-1C, 10 μ g/mL, 100 μ L/well) was maximally enhanced (2-2.5 fold) by 1 μ g/mL of the antibody.	

DATA



PREPARATION AND STORAGE

Reconstitution	Reconstitute at 0.2 mg/mL in sterile PBS.
Shipping	The product is shipped at ambient temperature. Upon receipt, store it immediately at the temperature recommended below. *Small pack size (-SP) is shipped with polar packs. Upon receipt, store it immediately at -20 to -70 $^{\circ}$ C
Stability & Storage	Use a manual defrost freezer and avoid repeated freeze-thaw cycles. <ul style="list-style-type: none"> • 12 months from date of receipt, -20 to -70 $^{\circ}$C as supplied. • 1 month, 2 to 8 $^{\circ}$C under sterile conditions after reconstitution. • 6 months, -20 to -70 $^{\circ}$C under sterile conditions after reconstitution.

BACKGROUND

Mouse Integrin β 2 is a transmembrane glycoprotein with an 85 kDa molecular weight (predicted) and is expressed by all leukocytes. The Integrin beta chain can be found in heterodimeric complexes with Integrin subunits α D, α L (complex also known as LFA-1), α M (Mac-1), or α X (CR-4) leading to different Integrin proteins. The extra cellular domains of mouse and canine Integrin β 2 share an 80.3% aa sequence identity. Integrins are known to participate in cell adhesion as well as cell-surface mediated signalling and leukocyte trafficking.