

## DESCRIPTION

<b>Species Reactivity</b>	Mouse
<b>Specificity</b>	Detects mouse ASCL1/Mash1 in direct ELISAs and Western blots.
<b>Source</b>	Polyclonal Goat IgG
<b>Purification</b>	Antigen Affinity-purified
<b>Immunogen</b>	<i>E. coli</i> -derived recombinant mouse ASCL1/Mash1 His74-Asp173 (Gln160Glu) Accession # Q53WV9
<b>Formulation</b>	Lyophilized from a 0.2 µm filtered solution in PBS with Trehalose. See Certificate of Analysis for details. *Small pack size (-SP) is supplied either lyophilized or as a 0.2 µm filtered solution in PBS.

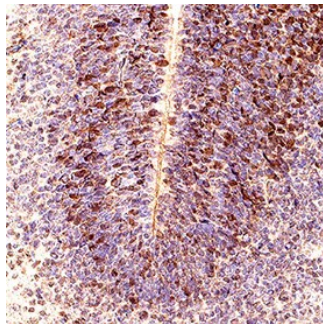
## APPLICATIONS

**Please Note:** Optimal dilutions should be determined by each laboratory for each application. *General Protocols* are available in the *Technical Information* section on our website.

	<b>Recommended Concentration</b>	<b>Sample</b>
<b>Western Blot</b>	0.1 µg/mL	Recombinant Mouse ASCL1/Mash1
<b>Immunohistochemistry</b>	3-15 µg/mL	Immersion fixed paraffin-embedded sections of mouse embryo (13 d.p.c., cross-section through developing CNS)

## DATA

### Immunohistochemistry



#### ASCL1/Mash1 in Mouse Embryo.

ASCL1/Mash1 was detected in immersion fixed paraffin-embedded sections of mouse embryo (13 d.p.c., cross-section through developing CNS) using Goat Anti-Mouse ASCL1/Mash1 Antigen Affinity-purified Polyclonal Antibody (Catalog # AF2567) at 3 µg/mL for 1 hour at room temperature followed by incubation with the Anti-Goat IgG VisUCyte™ HRP Polymer Antibody (Catalog # VC004). Before incubation with the primary antibody, tissue was subjected to heat-induced epitope retrieval using Antigen Retrieval Reagent-Basic (Catalog # CTS013). Tissue was stained using DAB (brown) and counterstained with hematoxylin (blue). Specific staining was localized to cell nuclei. Staining was performed using our protocol for IHC Staining with VisUCyte HRP Polymer Detection Reagents.

## PREPARATION AND STORAGE

<b>Reconstitution</b>	Reconstitute at 0.2 mg/mL in sterile PBS.
<b>Shipping</b>	The product is shipped at ambient temperature. Upon receipt, store it immediately at the temperature recommended below. *Small pack size (-SP) is shipped with polar packs. Upon receipt, store it immediately at -20 to -70 °C
<b>Stability &amp; Storage</b>	<b>Use a manual defrost freezer and avoid repeated freeze-thaw cycles.</b> <ul style="list-style-type: none"> <li>• 12 months from date of receipt, -20 to -70 °C as supplied.</li> <li>• 1 month, 2 to 8 °C under sterile conditions after reconstitution.</li> <li>• 6 months, -20 to -70 °C under sterile conditions after reconstitution.</li> </ul>

## BACKGROUND

Mash1, also known as achaete-scute complex-like 1 (ASCL1), is a member of the basic helix-loop-helix family of transcription factors. It is required for neuronal commitment and differentiation. The mouse immunogen used to generate this antibody shares 97% amino acid sequence identity with the equivalent region of human Mash1.