

**DESCRIPTION**

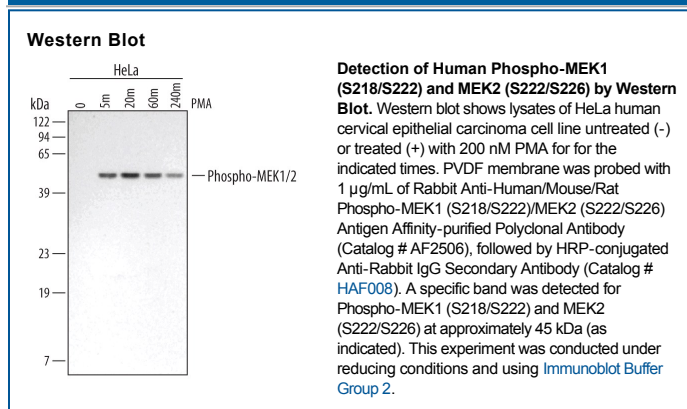
<b>Species Reactivity</b>	Human/Mouse/Rat
<b>Specificity</b>	Detects human, mouse, and rat MEK1 and MEK2 dually phosphorylated at S218/S222 and S222/S226, respectively.
<b>Source</b>	Polyclonal Rabbit IgG
<b>Purification</b>	Antigen Affinity-purified
<b>Immunogen</b>	Phosphopeptide containing human, mouse, and rat MEK1 S218/S222 site
<b>Formulation</b>	Lyophilized from a 0.2 µm filtered solution in PBS with Trehalose. See Certificate of Analysis for details. *Small pack size (-SP) is supplied as a 0.2 µm filtered solution in PBS.

**APPLICATIONS**

**Please Note:** Optimal dilutions should be determined by each laboratory for each application. *General Protocols* are available in the *Technical Information* section on our website.

	<b>Recommended Concentration</b>	<b>Sample</b>
<b>Western Blot</b>	1 µg/mL	See Below
<b>Immunocytochemistry</b>	5-15 µg/mL	Immersion fixed human peripheral blood mononuclear cells

**DATA**



**PREPARATION AND STORAGE**

<b>Reconstitution</b>	Reconstitute at 0.2 mg/mL in sterile PBS.
<b>Shipping</b>	The product is shipped at ambient temperature. Upon receipt, store it immediately at the temperature recommended below. *Small pack size (-SP) is shipped with polar packs. Upon receipt, store it immediately at -20 to -70 °C
<b>Stability &amp; Storage</b>	<b>Use a manual defrost freezer and avoid repeated freeze-thaw cycles.</b> <ul style="list-style-type: none"> <li>● 12 months from date of receipt, -20 to -70 °C as supplied.</li> <li>● 1 month, 2 to 8 °C under sterile conditions after reconstitution.</li> <li>● 6 months, -20 to -70 °C under sterile conditions after reconstitution.</li> </ul>

**BACKGROUND**

MEK1 and MEK2, also known as MAP2K1 and MAP2K2, are activated in response to mitogenic stimuli. Activation occurs through dual phosphorylation at S218/S222 of MEK1 and S222/S226 of MEK2 by several upstream MAP3Ks, including the Raf kinases. Both MEK1 and MEK2 are dual-specificity protein kinases, phosphorylating and activating ERK1 and ERK2 at Thr and Tyr positions.