

#### DESCRIPTION

<b>Species Reactivity</b>	Mouse
<b>Specificity</b>	Detects mouse MOG in direct ELISAs and Western blots. In direct ELISAs, less than 40% cross-reactivity with recombinant human MOG is observed.
<b>Source</b>	Polyclonal Goat IgG
<b>Purification</b>	Antigen Affinity-purified
<b>Immunogen</b>	Mouse myeloma cell line NS0-derived recombinant mouse MOG Gly29-Gly153 Accession # Q61885
<b>Formulation</b>	Lyophilized from a 0.2 µm filtered solution in PBS with Trehalose. See Certificate of Analysis for details. *Small pack size (-SP) is supplied as a 0.2 µm filtered solution in PBS.

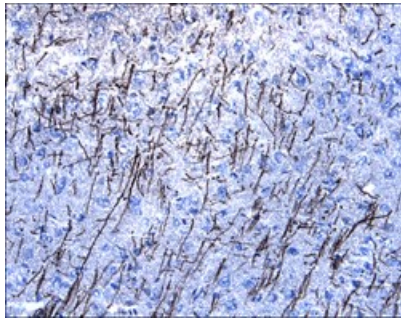
#### APPLICATIONS

**Please Note:** Optimal dilutions should be determined by each laboratory for each application. *General Protocols* are available in the *Technical Information* section on our website.

	<b>Recommended Concentration</b>	<b>Sample</b>
<b>Western Blot</b>	0.1 µg/mL	Recombinant Mouse MOG
<b>Immunohistochemistry</b>	5-15 µg/mL	See Below

#### DATA

##### Immunohistochemistry



**MOG in Mouse Brain.** MOG was detected in perfusion fixed frozen sections of mouse brain (cortex) using 15 µg/mL Goat Anti-Mouse MOG Antigen Affinity-purified Polyclonal Antibody (Catalog # AF2439) overnight at 4 °C. Tissue was stained with the Anti-Goat HRP-DAB Cell & Tissue Staining Kit (brown; Catalog # CTS008) and counterstained with hematoxylin (blue). View our protocol for [Chromogenic IHC Staining of Frozen Tissue Sections](#).

#### PREPARATION AND STORAGE

<b>Reconstitution</b>	Reconstitute at 0.2 mg/mL in sterile PBS.
<b>Shipping</b>	The product is shipped at ambient temperature. Upon receipt, store it immediately at the temperature recommended below. *Small pack size (-SP) is shipped with polar packs. Upon receipt, store it immediately at -20 to -70 °C
<b>Stability &amp; Storage</b>	<b>Use a manual defrost freezer and avoid repeated freeze-thaw cycles.</b> <ul style="list-style-type: none"> <li>● 12 months from date of receipt, -20 to -70 °C as supplied.</li> <li>● 1 month, 2 to 8 °C under sterile conditions after reconstitution.</li> <li>● 6 months, -20 to -70 °C under sterile conditions after reconstitution.</li> </ul>

#### BACKGROUND

Mouse MOG is an integral membrane protein belonging to the immunoglobulin superfamily. It is found exclusively on myelinating oligodendrocytes in the central nervous system. The amino-terminal extracellular domain of mouse MOG shares 97% and 92% amino acid sequence identity with the corresponding regions of rat and human MOG, respectively.