

DESCRIPTION

Species Reactivity	Canine
Specificity	Detects canine CD4 in direct ELISAs and Western blots. In direct ELISAs, approximately 25% cross-reactivity with recombinant feline CD4 is observed and 5% cross-reactivity with recombinant human CD4 is observed.
Source	Polyclonal Goat IgG
Purification	Antigen Affinity-purified
Immunogen	Mouse myeloma cell line NS0-derived recombinant canine CD4 Val25-Lys401 Accession # P33705
Formulation	Lyophilized from a 0.2 µm filtered solution in PBS with Trehalose. See Certificate of Analysis for details. *Small pack size (-SP) is supplied either lyophilized or as a 0.2 µm filtered solution in PBS.

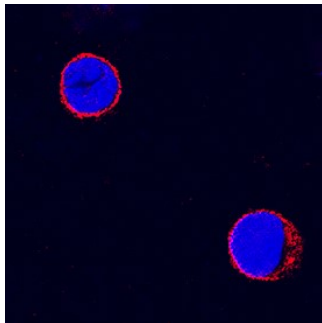
APPLICATIONS

Please Note: Optimal dilutions should be determined by each laboratory for each application. *General Protocols* are available in the *Technical Information* section on our website.

	Recommended Concentration	Sample
Western Blot	0.1 µg/mL	Recombinant Canine CD4
Flow Cytometry	0.25 µg/10 ⁶ cells	Canine peripheral blood mononuclear cells
Immunocytochemistry	5-15 µg/mL	See Below
CyTOF-ready	Ready to be labeled using established conjugation methods. No BSA or other carrier proteins that could interfere with conjugation.	

DATA

Immunocytochemistry



CD4 in Canine PBMCs. CD4 was detected in immersion fixed canine peripheral blood mononuclear cells (PBMCs) using Goat Anti-Canine CD4 Antigen Affinity-purified Polyclonal Antibody (Catalog # AF2410) at 10 µg/mL for 3 hours at room temperature. Cells were stained using the NorthernLights™ 557-conjugated Anti-Goat IgG Secondary Antibody (red; Catalog # NL001) and counterstained with DAPI (blue). Specific staining was localized to cell surfaces. View our protocol for [Fluorescent ICC Staining of Non-adherent Cells](#).

PREPARATION AND STORAGE

Reconstitution	Reconstitute at 0.2 mg/mL in sterile PBS.
Shipping	The product is shipped at ambient temperature. Upon receipt, store it immediately at the temperature recommended below. *Small pack size (-SP) is shipped with polar packs. Upon receipt, store it immediately at -20 to -70 °C
Stability & Storage	Use a manual defrost freezer and avoid repeated freeze-thaw cycles. <ul style="list-style-type: none"> ● 12 months from date of receipt, -20 to -70 °C as supplied. ● 1 month, 2 to 8 °C under sterile conditions after reconstitution. ● 6 months, -20 to -70 °C under sterile conditions after reconstitution.

BACKGROUND

CD4 is a type I membrane protein belonging to the immunoglobulin superfamily. It functions as an accessory protein for T cell receptor/MHC class II antigen interaction.