

**DESCRIPTION**

<b>Species Reactivity</b>	Mouse
<b>Specificity</b>	Detects mouse S100A10 in direct ELISAs and Western blots. In these formats, approximately 5% cross-reactivity with recombinant human (rh) S100A10 is observed and less than 1% cross-reactivity with rhS100B and recombinant mouse S100A9 is observed.
<b>Source</b>	Polyclonal Goat IgG
<b>Purification</b>	Antigen Affinity-purified
<b>Immunogen</b>	<i>E. coli</i> -derived recombinant mouse S100A10 Pro2-Lys97 Accession # P08207
<b>Formulation</b>	Lyophilized from a 0.2 µm filtered solution in PBS with Trehalose. See Certificate of Analysis for details. *Small pack size (-SP) is supplied either lyophilized or as a 0.2 µm filtered solution in PBS.

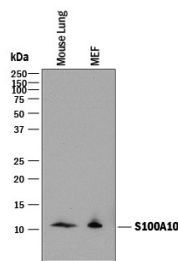
**APPLICATIONS**

**Please Note:** Optimal dilutions should be determined by each laboratory for each application. *General Protocols* are available in the *Technical Information* section on our website.

	<b>Recommended Concentration</b>	<b>Sample</b>
<b>Western Blot</b>	0.1 µg/mL	See Below
<b>Immunohistochemistry</b>	5-15 µg/mL	See Below
<b>Simple Western</b>	1 µg/mL	See Below

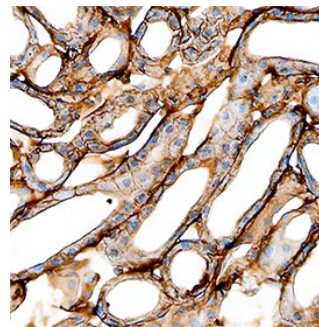
**DATA**

**Western Blot**



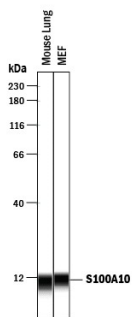
**Detection of Mouse S100A10 by Western Blot.** Western blot shows lysates of mouse lung and MEF mouse embryonic feeder cells. PVDF membrane was probed with 0.1 µg/mL of Goat Anti-Mouse S100A10 Antigen Affinity-purified Polyclonal Antibody (Catalog # AF2377) followed by HRP-conjugated Anti-Goat IgG Secondary Antibody (Catalog # HAF017). A specific band was detected for S100A10 at approximately 11 kDa (as indicated). This experiment was conducted under reducing conditions and using Immunoblot Buffer Group 1.

**Immunohistochemistry**



**S100A10 in Mouse Kidney.** S100A10 was detected in perfusion fixed frozen sections of mouse kidney using Goat Anti-Mouse S100A10 Antigen Affinity-purified Polyclonal Antibody (Catalog # AF2377) at 15 µg/mL overnight at 4 °C. Tissue was stained using the Anti-Goat HRP-DAB Cell & Tissue Staining Kit (brown; Catalog # CTS008) and counterstained with hematoxylin (blue). Specific staining was localized to plasma membrane in epithelial cells. View our protocol for *Chromogenic IHC Staining of Frozen Tissue Sections*.

**Simple Western**



**Detection of Mouse S100A10 by Simple Western™.** Simple Western lane view shows lysates of mouse lung tissue and MEF mouse embryonic feeder cells, loaded at 0.2 mg/mL. A specific band was detected for S100A10 at approximately 11 kDa (as indicated) using 1 µg/mL of Goat Anti-Mouse S100A10 Antigen Affinity-purified Polyclonal Antibody (Catalog # AF2377) followed by 1:50 dilution of HRP-conjugated Anti-Goat IgG Secondary Antibody (Catalog # HAF109). This experiment was conducted under reducing conditions and using the 12-230 kDa separation system.

**PREPARATION AND STORAGE**

<b>Reconstitution</b>	Reconstitute at 0.2 mg/mL in sterile PBS.
<b>Shipping</b>	The product is shipped at ambient temperature. Upon receipt, store it immediately at the temperature recommended below. *Small pack size (-SP) is shipped with polar packs. Upon receipt, store it immediately at -20 to -70 °C
<b>Stability &amp; Storage</b>	<b>Use a manual defrost freezer and avoid repeated freeze-thaw cycles.</b> <ul style="list-style-type: none"> <li>• 12 months from date of receipt, -20 to -70 °C as supplied.</li> <li>• 1 month, 2 to 8 °C under sterile conditions after reconstitution.</li> <li>• 6 months, -20 to -70 °C under sterile conditions after reconstitution.</li> </ul>

**BACKGROUND**

S100A10 is a member of the S100 family of EF hand calcium-binding proteins. It is primarily found in mast cells as well as heterotetrameric complexes (two annexin A2 subunits and two S100 A10 subunits) that are present intracellularly at the plasma membrane or on the extracellular cell surface. Extracellular S100A10 is a key plasminogen receptor that plays an important role in cellular plasmin production and cellular invasiveness.