

DESCRIPTION

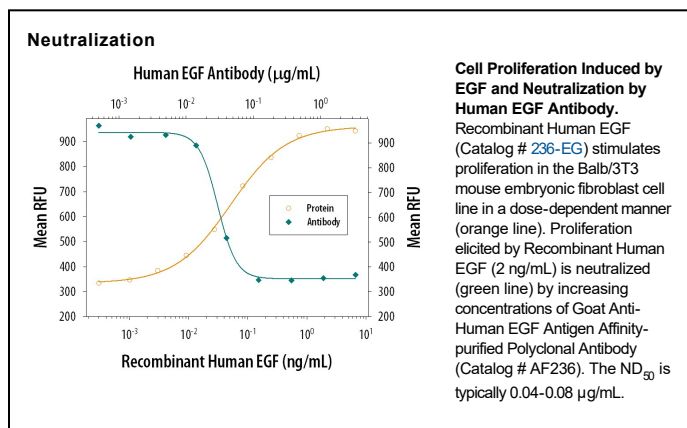
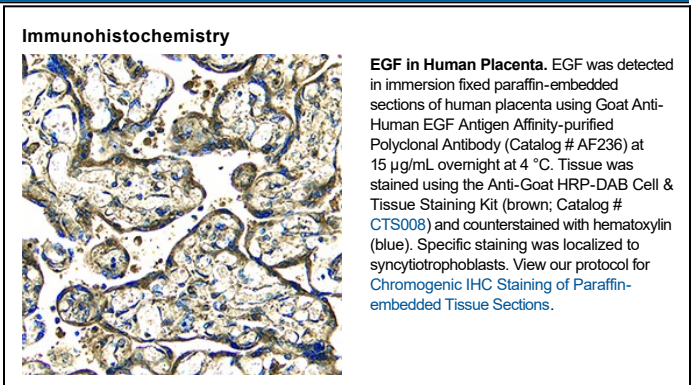
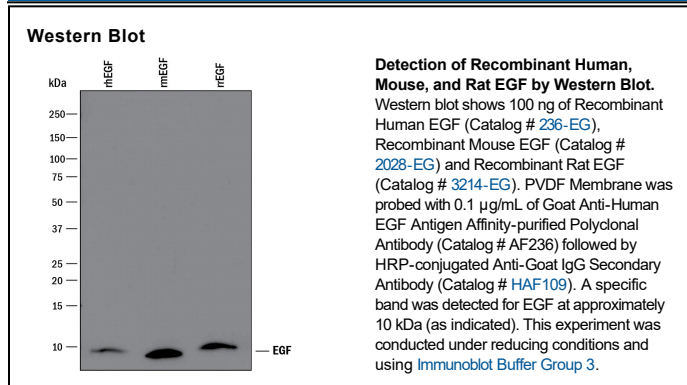
Species Reactivity	Human
Specificity	Detects human EGF in direct ELISAs and Western blots. In direct ELISAs, approximately 20% cross-reactivity with recombinant rat EGF and 5% cross-reactivity with recombinant mouse EGF is observed.
Source	Polyclonal Goat IgG
Purification	Antigen Affinity-purified
Immunogen	<i>E. coli</i> -derived recombinant human EGF
Endotoxin Level	<0.10 EU per 1 µg of the antibody by the LAL method.
Formulation	Lyophilized from a 0.2 µm filtered solution in PBS with Trehalose. See Certificate of Analysis for details. *Small pack size (-SP) is supplied either lyophilized or as a 0.2 µm filtered solution in PBS.

APPLICATIONS

Please Note: Optimal dilutions should be determined by each laboratory for each application. *General Protocols* are available in the *Technical Information* section on our website.

	Recommended Concentration	Sample
Western Blot	0.1 µg/mL	See Below
Immunohistochemistry	5-15 µg/mL	See Below
Neutralization	Measured by its ability to neutralize EGF-induced proliferation in the Balb/3T3 mouse embryonic fibroblast cell line. The Neutralization Dose (ND ₅₀) is typically 0.04-0.08 µg/mL in the presence of 2 ng/mL Recombinant Human EGF.	

DATA



PREPARATION AND STORAGE

Reconstitution	Reconstitute at 0.2 mg/mL in sterile PBS.
Shipping	The product is shipped at ambient temperature. Upon receipt, store it immediately at the temperature recommended below. *Small pack size (-SP) is shipped with polar packs. Upon receipt, store it immediately at -20 to -70 °C
Stability & Storage	Use a manual defrost freezer and avoid repeated freeze-thaw cycles. <ul style="list-style-type: none"> • 12 months from date of receipt, -20 to -70 °C as supplied. • 1 month, 2 to 8 °C under sterile conditions after reconstitution. • 6 months, -20 to -70 °C under sterile conditions after reconstitution.

BACKGROUND

EGF is the prototypic member of a family of growth factors that are characterized by the presence of EGF like domains and activate members of the EGF receptor family. Proteolytic cleavage of a membrane-bound precursor releases mature soluble EGF which interacts with the EGF R to promote proliferation and differentiation of mesenchymal and epithelial cells.