

## DESCRIPTION

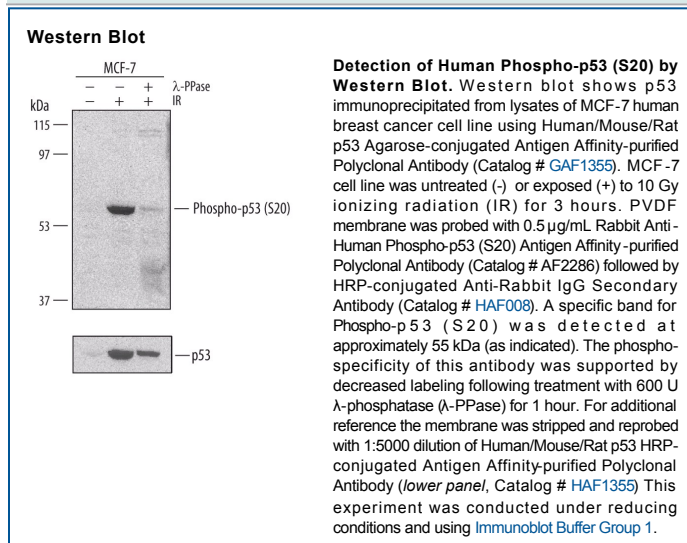
<b>Species Reactivity</b>	Human
<b>Specificity</b>	Detects human p53 when phosphorylated at S20 in Western blots.
<b>Source</b>	Polyclonal Rabbit IgG
<b>Purification</b>	Antigen Affinity-purified
<b>Immunogen</b>	Phosphopeptide containing human p53 S20 site
<b>Formulation</b>	Lyophilized from a 0.2 µm filtered solution in PBS with Trehalose. See Certificate of Analysis for details.

## APPLICATIONS

**Please Note:** Optimal dilutions should be determined by each laboratory for each application. [General Protocols](#) are available in the Technical Information section on our website.

	<b>Recommended Concentration</b>	<b>Sample</b>
<b>Western Blot</b>	0.5 µg/mL	See Below

## DATA



## PREPARATION AND STORAGE

<b>Reconstitution</b>	Reconstitute at 0.2 mg/mL in sterile PBS.
<b>Shipping</b>	The product is shipped at ambient temperature. Upon receipt, store it immediately at the temperature recommended below.
<b>Stability &amp; Storage</b>	<p><b>Use a manual defrost freezer and avoid repeated freeze-thaw cycles.</b></p> <ul style="list-style-type: none"> <li>● 12 months from date of receipt, -20 to -70 °C as supplied.</li> <li>● 1 month from date of receipt, 2 to 8 °C, reconstituted.</li> <li>● 6 months from date of receipt, -20 to -70 °C, reconstituted.</li> </ul>

## BACKGROUND

The p53 tumor suppressor protein acts to enforce cell cycle checkpoints or signal apoptosis in cells that have incurred genotoxic damage. The Chk1 or Chk2 kinases phosphorylate p53 at serine 20 to enforce cell cycle arrest. Serine 20 phosphorylation leads to p53 stabilization and enhances transactivation of p53 target genes.