

DESCRIPTION

Species Reactivity	Human
Specificity	Detects human BRCA1 N-Terminus in Western blots.
Source	Polyclonal Goat IgG
Purification	Antigen Affinity-purified
Immunogen	<i>E. coli</i> -derived recombinant human BRCA1 N-Terminus Met1-Gly200 Accession # P38398
Formulation	Lyophilized from a 0.2 µm filtered solution in PBS with Trehalose. See Certificate of Analysis for details. *Small pack size (-SP) is supplied either lyophilized or as a 0.2 µm filtered solution in PBS.

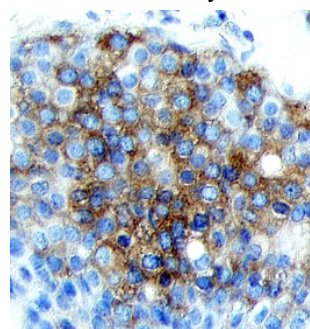
APPLICATIONS

Please Note: Optimal dilutions should be determined by each laboratory for each application. [General Protocols](#) are available in the Technical Information section on our website.

	Recommended Concentration	Sample
Western Blot	1 µg/mL	See Below
Immunohistochemistry	5-15 µg/mL	See Below
Immunoprecipitation	3 µg/500 µg cell lysate	U2OS human osteosarcoma cell line and HeLa human cervical epithelial carcinoma cell line, see our available Western blot detection antibodies

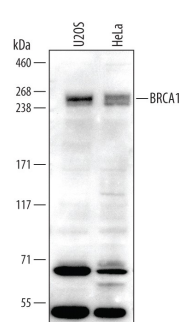
DATA

Immunohistochemistry



BRCA1 in Human Breast Cancer Tissue.
BRCA1 was detected in immersion fixed paraffin-embedded sections of human breast cancer tissue using 5 µg/mL Goat Anti-Human BRCA1 Antigen Affinity-purified Polyclonal Antibody (Catalog # AF2210) overnight at 4 °C. Tissue was stained with the Anti-Goat HRP-DAB Cell & Tissue Staining Kit (brown; Catalog # CTS008) and counterstained with hematoxylin (blue). View our protocol for [Chromogenic IHC Staining of Paraffin-embedded Tissue Sections](#).

Western Blot



Detection of Human BRCA1 by Western Blot.

Western blot shows lysates of U2OS human osteosarcoma cell line and HeLa human cervical epithelial carcinoma cell line. PVDF membrane was probed with 1 µg/mL of Goat Anti-human BRCA1 Antigen Affinity-purified Polyclonal Antibody (Catalog # AF2210) followed by HRP-conjugated Anti-Goat IgG Secondary Antibody (Catalog # [HAF109](#)). A specific band was detected for BRCA1 at approximately 250 kDa (as indicated). This experiment was conducted under reducing conditions and using [Immunoblot Buffer Group 1](#).

PREPARATION AND STORAGE

Reconstitution	Reconstitute at 0.2 mg/mL in sterile PBS.
Shipping	The product is shipped at ambient temperature. Upon receipt, store it immediately at the temperature recommended below. *Small pack size (-SP) is shipped with polar packs. Upon receipt, store it immediately at -20 to -70 °C
Stability & Storage	Use a manual defrost freezer and avoid repeated freeze-thaw cycles. <ul style="list-style-type: none"> • 12 months from date of receipt, -20 to -70 °C as supplied. • 1 month, 2 to 8 °C under sterile conditions after reconstitution. • 6 months, -20 to -70 °C under sterile conditions after reconstitution.

BACKGROUND

The BRCA1 (Breast Cancer gene 1) tumor suppressor protein has many reported functions. In addition to mediating signal transduction in DNA damage and repair responses, BRCA1 regulates transcriptional activity and assists in the preservation of chromosomal stability. BRCA1 is one of the first proteins recruited to sites of DNA double-strand breaks, and serves as part of a scaffold for assembling other DNA damage response or repair factors.