

## DESCRIPTION

<b>Species Reactivity</b>	Human
<b>Specificity</b>	Detects human Angiopoietin-like 1/ANGPTL1 in direct ELISAs and Western blots. In direct ELISAs, less than 10% cross-reactivity with recombinant mouse Angiopoietin-like 1/ANGPTL1, recombinant human Angiopoietin-like 2/ANGPTL2 and recombinant human Angiopoietin-like 6/ANGPTL6 is observed.
<b>Source</b>	Polyclonal Goat IgG
<b>Purification</b>	Antigen Affinity-purified
<b>Immunogen</b>	Mouse myeloma cell line NS0-derived recombinant human Angiopoietin-like 1/ANGPTL1 Ala39-Asp491 Accession # O95841
<b>Formulation</b>	Lyophilized from a 0.2 µm filtered solution in PBS with Trehalose. See Certificate of Analysis for details. *Small pack size (-SP) is supplied either lyophilized or as a 0.2 µm filtered solution in PBS.

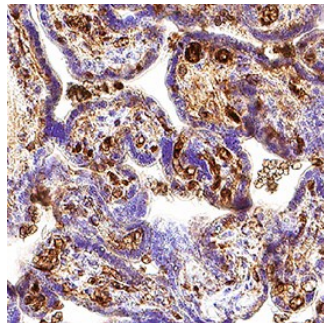
## APPLICATIONS

**Please Note:** Optimal dilutions should be determined by each laboratory for each application. *General Protocols* are available in the *Technical Information* section on our website.

	Recommended Concentration	Sample
<b>Western Blot</b>	0.1 µg/mL	Recombinant Human Angiopoietin-like 1
<b>Immunohistochemistry</b>	3-15 µg/mL	Immersion fixed paraffin-embedded sections of Human Placenta

## DATA

### Immunohistochemistry



**Detection of Angiopoietin-like Protein 1/ANGPTL1 in Human Placenta.** Angiopoietin-like Protein 1/ANGPTL1 was detected in immersion fixed paraffin-embedded sections of Human Placenta using Goat Anti-Human Angiopoietin-like Protein 1/ANGPTL1 Antigen Affinity-purified Polyclonal Antibody (Catalog # AF2204) at 3 µg/mL for 1 hour at room temperature followed by incubation with the Anti-Goat IgG VisUCyte™ HRP Polymer Antibody (Catalog # VC004). Before incubation with the primary antibody, tissue was subjected to heat-induced epitope retrieval using VisUCyte Antigen Retrieval Reagent-Basic (Catalog # VCTS021). Tissue was stained using DAB (brown) and counterstained with hematoxylin (blue). Specific staining was localized to vascular endothelial cells in chorionic villi. View our protocol for IHC Staining with VisUCyte HRP Polymer Detection Reagents.

## PREPARATION AND STORAGE

<b>Reconstitution</b>	Reconstitute at 0.2 mg/mL in sterile PBS.
<b>Shipping</b>	The product is shipped at ambient temperature. Upon receipt, store it immediately at the temperature recommended below. *Small pack size (-SP) is shipped with polar packs. Upon receipt, store it immediately at -20 to -70 °C
<b>Stability &amp; Storage</b>	<b>Use a manual defrost freezer and avoid repeated freeze-thaw cycles.</b> <ul style="list-style-type: none"> <li>• 12 months from date of receipt, -20 to -70 °C as supplied.</li> <li>• 1 month, 2 to 8 °C under sterile conditions after reconstitution.</li> <li>• 6 months, -20 to -70 °C under sterile conditions after reconstitution.</li> </ul>

## BACKGROUND

Angiopoietin-like 1 is a secreted glycoprotein structurally related to the angiopoietins. It contains an N-terminal coiled-coiled domain and a C-terminal fibrinogen-like domain. Unlike angiopoietins which are agonists and antagonists of the Tie-2 receptor tyrosine kinase, Angiopoietin-like 1 is an orphan ligand that does not bind Tie-2.