

DESCRIPTION

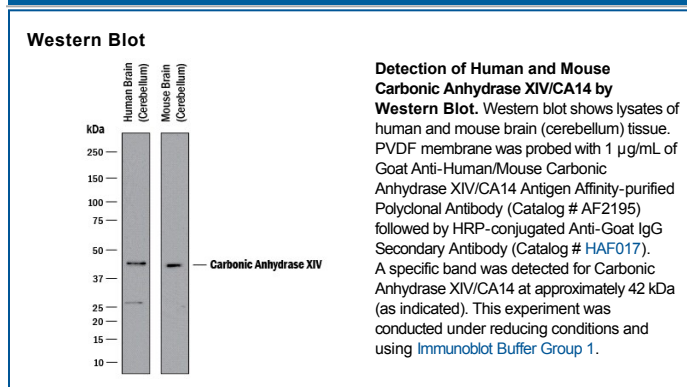
Species Reactivity	Human/Mouse
Specificity	Detects human Carbonic Anhydrase XIV/CA14 in direct ELISAs and Western blots. In direct ELISAs and Western blots, less than 1% cross-reactivity with recombinant human (rh) CA1, rhCA2, rhCA3, rhCA4, rhCA8, rhCA9, rhCA10, rhCA12, and rhCA13 is observed.
Source	Polyclonal Goat IgG
Purification	Antigen Affinity-purified
Immunogen	Mouse myeloma cell line NS0-derived recombinant human Carbonic Anhydrase XIV/CA14 Gly19-Met290 Accession # Q9ULX7
Formulation	Lyophilized from a 0.2 µm filtered solution in PBS with Trehalose. See Certificate of Analysis for details. *Small pack size (-SP) is supplied as a 0.2 µm filtered solution in PBS.

APPLICATIONS

Please Note: Optimal dilutions should be determined by each laboratory for each application. *General Protocols* are available in the *Technical Information* section on our website.

	Recommended Concentration	Sample
Western Blot	1 µg/mL	See Below
Immunoprecipitation	25 µg/mL	Conditioned cell culture medium spiked with Recombinant Human Carbonic Anhydrase XIV (Catalog # 2195-CA), see our available Western blot detection antibodies

DATA



PREPARATION AND STORAGE

Reconstitution	Reconstitute at 0.2 mg/mL in sterile PBS.
Shipping	The product is shipped at ambient temperature. Upon receipt, store it immediately at the temperature recommended below. *Small pack size (-SP) is shipped with polar packs. Upon receipt, store it immediately at -20 to -70 °C
Stability & Storage	Use a manual defrost freezer and avoid repeated freeze-thaw cycles. <ul style="list-style-type: none"> ● 12 months from date of receipt, -20 to -70 °C as supplied. ● 1 month, 2 to 8 °C under sterile conditions after reconstitution. ● 6 months, -20 to -70 °C under sterile conditions after reconstitution.

BACKGROUND

Carbonic Anhydrase (CA) catalyzes the reversible reaction of $\text{CO}_2 + \text{H}_2\text{O} = \text{HCO}_3^- + \text{H}^+$, which is fundamental to many processes such as respiration, renal tubular acidification and bone resorption (1). Topics in a CA meeting (6th International Conference on the CAs, June 20-25, 2003, Slovakia) ranged from the use of CAs as markers for tumor and hypoxia in the clinic, as a nutritional supplement in milk, and as a tool for CO_2 removal and mosquito control in industry. CA14 is a type I membrane enzyme highly expressed in all parts of the central nervous system with lower expression in adult liver, heart, small intestine, colon, kidney, urinary bladder, and skeletal muscle (2).

References:

1. Hewett-Emmett, D. and R.E. Tashian (1996) Mol. Phylogenet. Evol. **5**:50.
2. Fujikawa-Adachi, K. *et al.* (1999) Genomics **61**:74.