

DESCRIPTION

Species Reactivity	Human
Specificity	Detects human TACE in direct ELISAs and Western blots. In direct ELISAs and Western blots, less than 1% cross-reactivity with recombinant human (rh) BACE, rhADAM8, rhADAM9, rhADAM10, and rhADAM15 is observed.
Source	Polyclonal Goat IgG
Purification	Antigen Affinity-purified
Immunogen	<i>E. coli</i> -derived recombinant human TACE Asp695-Cys824 Accession # P78536
Formulation	Lyophilized from a 0.2 µm filtered solution in PBS with Trehalose. See Certificate of Analysis for details. *Small pack size (-SP) is supplied as a 0.2 µm filtered solution in PBS.

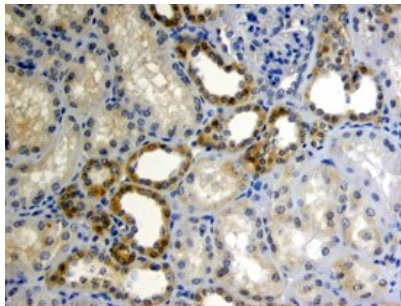
APPLICATIONS

Please Note: Optimal dilutions should be determined by each laboratory for each application. *General Protocols* are available in the *Technical Information* section on our website.

	Recommended Concentration	Sample
Western Blot	0.1 µg/mL	Recombinant Human TACE/ADAM17 Cytosolic Domain, Western Blot Standard (Catalog # WBC030)
Immunohistochemistry	5-15 µg/mL	See Below
Immunoprecipitation	25 µg/mL	Conditioned cell culture medium spiked with Recombinant Human TACE/ADAM17 (Catalog # 930-ADB), see our available Western blot detection antibodies

DATA

Immunohistochemistry



TACE/ADAM17 in Human Kidney Cancer Tissue.
TACE/ADAM17 was detected in immersion fixed paraffin-embedded sections of human kidney cancer tissue using Goat Anti-Human TACE/ADAM17 Cytosolic Domain Antigen Affinity-purified Polyclonal Antibody (Catalog # AF2129) at 15 µg/mL overnight at 4 °C. Tissue was stained using the Anti-Goat HRP-DAB Cell & Tissue Staining Kit (brown; Catalog # CTS008) and counterstained with hematoxylin (blue). View our protocol for [Chromogenic IHC Staining of Paraffin-embedded Tissue Sections](#).

PREPARATION AND STORAGE

Reconstitution	Reconstitute at 0.2 mg/mL in sterile PBS.
Shipping	The product is shipped at ambient temperature. Upon receipt, store it immediately at the temperature recommended below. *Small pack size (-SP) is shipped with polar packs. Upon receipt, store it immediately at -20 to -70 °C
Stability & Storage	Use a manual defrost freezer and avoid repeated freeze-thaw cycles. <ul style="list-style-type: none"> ● 12 months from date of receipt, -20 to -70 °C as supplied. ● 1 month, 2 to 8 °C under sterile conditions after reconstitution. ● 6 months, -20 to -70 °C under sterile conditions after reconstitution.