

DESCRIPTION

Species Reactivity	Human
Specificity	Detects human Kremen-1 in direct ELISAs and Western blots. In direct ELISAs, approximately 25% cross-reactivity with recombinant mouse Kremen-1 and less than 5% cross-reactivity with recombinant human Kremen-2 is observed.
Source	Polyclonal Goat IgG
Purification	Antigen Affinity-purified
Immunogen	Mouse myeloma cell line NS0-derived recombinant mouse Kremen-1 Ala20-Gly397 Accession # NP_114434
Formulation	Lyophilized from a 0.2 µm filtered solution in PBS with Trehalose. See Certificate of Analysis for details. *Small pack size (-SP) is supplied either lyophilized or as a 0.2 µm filtered solution in PBS.

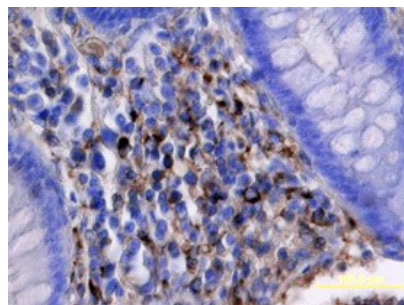
APPLICATIONS

Please Note: Optimal dilutions should be determined by each laboratory for each application. [General Protocols](#) are available in the Technical Information section on our website.

	Recommended Concentration	Sample
Western Blot	0.1 µg/mL	Recombinant Human Kremen-1
Immunohistochemistry	5-15 µg/mL	See Below

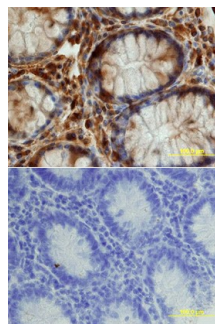
DATA

Immunohistochemistry



Kremen-1 in Human Colon Cancer Tissue. Kremen-1 was detected in immersion fixed paraffin-embedded sections of human colon cancer tissue using Goat Anti-Human Kremen-1 Antigen Affinity-purified Polyclonal Antibody (Catalog # AF2127) at 15 µg/mL overnight at 4 °C. Tissue was stained using the Anti-Goat HRP-DAB Cell & Tissue Staining Kit (brown; Catalog # CTS008) and counterstained with hematoxylin (blue). View our protocol for [Chromogenic IHC Staining of Paraffin-embedded Tissue Sections](#).

Immunohistochemistry



Kremen-1 in Human Colon. Kremen-1 was detected in immersion fixed paraffin-embedded sections of human colon array using Goat Anti-Human Kremen-1 Antigen Affinity-purified Polyclonal Antibody (Catalog # AF2127) at 15 µg/mL overnight at 4 °C. Tissue was stained using the Anti-Goat HRP-DAB Cell & Tissue Staining Kit (brown; Catalog # CTS008) and counterstained with hematoxylin (blue). Lower panel shows a lack of labeling if primary antibodies are omitted and tissue is stained only with secondary antibody followed by incubation with detection reagents. View our protocol for [Chromogenic IHC Staining of Paraffin-embedded Tissue Sections](#).

PREPARATION AND STORAGE

Reconstitution	Reconstitute at 0.2 mg/mL in sterile PBS.
Shipping	The product is shipped at ambient temperature. Upon receipt, store it immediately at the temperature recommended below. *Small pack size (-SP) is shipped with polar packs. Upon receipt, store it immediately at -20 to -70 °C
Stability & Storage	Use a manual defrost freezer and avoid repeated freeze-thaw cycles. <ul style="list-style-type: none"> 12 months from date of receipt, -20 to -70 °C as supplied. 1 month, 2 to 8 °C under sterile conditions after reconstitution. 6 months, -20 to -70 °C under sterile conditions after reconstitution.

BACKGROUND

Kremen-1 is a type I transmembrane protein that contains extracellular Kringle, WSC, and CUB domains. It is expressed in diverse embryonic and adult tissues. Kremen proteins bind the secreted Dickkopf proteins Dkk-1, -2, and -4 with high affinity to antagonize the canonical Wnt signaling pathway.