

## DESCRIPTION

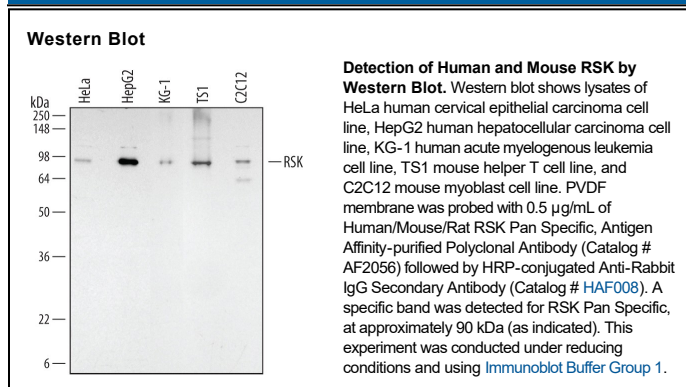
<b>Species Reactivity</b>	Human/Mouse/Rat
<b>Specificity</b>	Detects endogenous human, mouse and rat RSK family isoforms in Western blots.
<b>Source</b>	Polyclonal Rabbit IgG
<b>Purification</b>	Antigen Affinity-purified
<b>Immunogen</b>	Human RSK2 synthetic peptide
<b>Formulation</b>	Lyophilized from a 0.2 µm filtered solution in PBS with Trehalose. See Certificate of Analysis for details. *Small pack size (-SP) is supplied either lyophilized or as a 0.2 µm filtered solution in PBS.

## APPLICATIONS

**Please Note:** Optimal dilutions should be determined by each laboratory for each application. *General Protocols* are available in the *Technical Information* section on our website.

	<b>Recommended Concentration</b>	<b>Sample</b>
<b>Western Blot</b>	0.5 µg/mL	See Below

## DATA



## PREPARATION AND STORAGE

<b>Reconstitution</b>	Reconstitute at 0.2 mg/mL in sterile PBS.
<b>Shipping</b>	The product is shipped at ambient temperature. Upon receipt, store it immediately at the temperature recommended below. *Small pack size (-SP) is shipped with polar packs. Upon receipt, store it immediately at -20 to -70 °C
<b>Stability &amp; Storage</b>	<p><b>Use a manual defrost freezer and avoid repeated freeze-thaw cycles.</b></p> <ul style="list-style-type: none"> <li>● 12 months from date of receipt, -20 to -70 °C as supplied.</li> <li>● 1 month, 2 to 8 °C under sterile conditions after reconstitution.</li> <li>● 6 months, -20 to -70 °C under sterile conditions after reconstitution.</li> </ul>

## BACKGROUND

This peptide sequence is identical to amino acids 162-184 of human RSK3 (RPS6KA2). The sequence differs at one position from amino acids 165-187 of human RSK1 (RPS6KA1) and at two positions from amino acids 176-198 of human RSK4 (RPS6KA6). The immunogen is also highly homologous to the corresponding sequences of mouse and rat RSK family isoforms.