

DESCRIPTION

Species Reactivity	Human
Specificity	Detects human Kallikrein 6 in direct ELISAs and Western blots. In direct ELISAs, less than 1% cross-reactivity with recombinant human (rh) Kallikrein 3, rhKallikrein 5, rhKallikrein 11, rhKallikrein 13, rhKallikrein 14, and rhKallikrein 15 is observed.
Source	Polyclonal Goat IgG
Purification	Antigen Affinity-purified
Immunogen	Mouse myeloma cell line NS0-derived recombinant human Kallikrein 6 Glu17-Lys244 Accession # Q92876
Formulation	Lyophilized from a 0.2 µm filtered solution in PBS with Trehalose. See Certificate of Analysis for details. *Small pack size (-SP) is supplied as a 0.2 µm filtered solution in PBS.

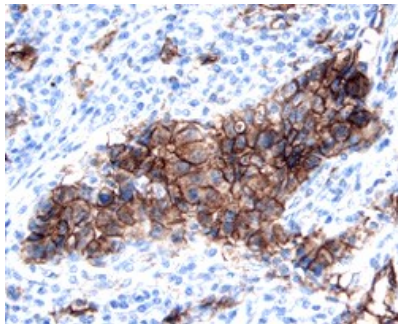
APPLICATIONS

Please Note: Optimal dilutions should be determined by each laboratory for each application. [General Protocols](#) are available in the [Technical Information](#) section on our website.

	Recommended Concentration	Sample
Western Blot	0.1 µg/mL	Recombinant Human Kallikrein 6/Neurosin (Catalog # 5164-SE)
Immunohistochemistry	5-15 µg/mL	See Below
Immunoprecipitation	25 µg/mL	Conditioned cell culture medium spiked with Recombinant Human Kallikrein 6/Neurosin (Catalog # 5164-SE), see our available Western blot detection antibodies

DATA

Immunohistochemistry



Kallikrein 6/Neurosin in Human Breast Cancer Tissue.

Kallikrein 6/Neurosin was detected in immersion fixed paraffin-embedded sections of human breast cancer tissue using 15 µg/mL Goat Anti-Human Kallikrein 6/Neurosin Antigen Affinity-purified Polyclonal Antibody (Catalog # AF2008) overnight at 4 °C. Tissue was stained with the Anti-Goat HRP-DAB Cell & Tissue Staining Kit (brown; Catalog # CTS008) and counterstained with hematoxylin (blue). View our protocol for [Chromogenic IHC Staining of Paraffin-embedded Tissue Sections](#).

PREPARATION AND STORAGE

Reconstitution	Reconstitute at 0.2 mg/mL in sterile PBS.
Shipping	The product is shipped at ambient temperature. Upon receipt, store it immediately at the temperature recommended below. *Small pack size (-SP) is shipped with polar packs. Upon receipt, store it immediately at -20 to -70 °C
Stability & Storage	Use a manual defrost freezer and avoid repeated freeze-thaw cycles. <ul style="list-style-type: none"> • 12 months from date of receipt, -20 to -70 °C as supplied. • 1 month, 2 to 8 °C under sterile conditions after reconstitution. • 6 months, -20 to -70 °C under sterile conditions after reconstitution.

BACKGROUND

Tissue kallikreins are a family of extracellular serine proteases consisting of 15 members (1, 2). The genes of this family aligned in tandem on chromosome 19q13.4 represent the largest contiguous group of proteases within the human genome. Tissue kallikreins have attracted great interest as potential biomarkers for various cancers, including prostate, ovarian, breast, testicular, and lung (2, 3). Human Kallikrein 6 (hKLK6) is a member of tissue kallikrein family observed in breast and brain tissues, colon carcinoma cells, and oligodendrocytes (1-3). Known protein substrates of hKLK6 are myelin basic protein, the precursor of the Aβ amyloid peptide, and plasminogen. Its physiological functions may include the participation in demyelination processes as well as in the progression of inflammatory disease of the CNS. The level of hKLK6 is reduced in brain extracts of Alzheimer patients and increased in serum of patients with ovarian cancer.

References:

1. Emami, N. and E.P. Diamandis (2007) Clin. Chim. Acta **381**:78.
2. Borgoño, C.A. and E.P. Diamandis (2004) Nat. Rev. Cancer **4**:876.
3. Paliouras, M. *et al.* (2007) Cancer Lett. **249**:61.