

## DESCRIPTION

<b>Species Reactivity</b>	Mouse
<b>Specificity</b>	Detects mouse TMEFF1/Tomoregulin-1 in direct ELISAs and Western blots. In direct ELISAs and Western blots, approximately 40% cross-reactivity with recombinant human (rh) TMEFF1 is observed and less than 5% cross-reactivity with rhTMEFF2 is observed.
<b>Source</b>	Polyclonal Goat IgG
<b>Purification</b>	Antigen Affinity-purified
<b>Immunogen</b>	Mouse myeloma cell line NS0-derived recombinant mouse TMEFF1/Tomoregulin-1 Ser37-Thr320 Accession # Q6PFE7
<b>Formulation</b>	Lyophilized from a 0.2 µm filtered solution in PBS with Trehalose. See Certificate of Analysis for details. *Small pack size (-SP) is supplied either lyophilized or as a 0.2 µm filtered solution in PBS.

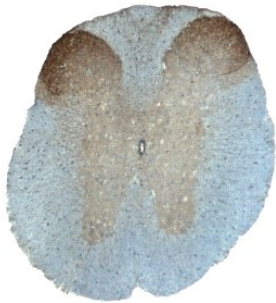
## APPLICATIONS

**Please Note:** Optimal dilutions should be determined by each laboratory for each application. *General Protocols* are available in the *Technical Information* section on our website.

	Recommended Concentration	Sample
<b>Western Blot</b>	0.1 µg/mL	Recombinant Mouse TMEFF1/Tomoregulin-1
<b>Immunohistochemistry</b>	5-15 µg/mL	See Below

## DATA

### Immunohistochemistry



**TMEFF1/Tomoregulin-1 in Mouse Spinal Cord.** TMEFF1/Tomoregulin-1 was detected in perfusion fixed frozen sections of mouse spinal cord using 15 µg/mL Goat Anti-Mouse TMEFF1/Tomoregulin-1 Antigen Affinity-purified Polyclonal Antibody (Catalog # AF1995) overnight at 4 °C. Tissue was stained with the Anti-Goat HRP-DAB Cell & Tissue Staining Kit (brown; Catalog # CTS008) and counterstained with hematoxylin (blue). View our protocol for [Chromogenic IHC Staining of Frozen Tissue Sections](#).

## PREPARATION AND STORAGE

<b>Reconstitution</b>	Reconstitute at 0.2 mg/mL in sterile PBS.
<b>Shipping</b>	The product is shipped at ambient temperature. Upon receipt, store it immediately at the temperature recommended below. *Small pack size (-SP) is shipped with polar packs. Upon receipt, store it immediately at -20 to -70 °C
<b>Stability &amp; Storage</b>	<b>Use a manual defrost freezer and avoid repeated freeze-thaw cycles.</b> <ul style="list-style-type: none"> <li>● 12 months from date of receipt, -20 to -70 °C as supplied.</li> <li>● 1 month, 2 to 8 °C under sterile conditions after reconstitution.</li> <li>● 6 months, -20 to -70 °C under sterile conditions after reconstitution.</li> </ul>

## BACKGROUND

TMEFF1, also known as tomoregulin 1 is a type I transmembrane glycoprotein that contains two follistatin modules and an EGF domain in its extracellular domain, a transmembrane domain and a short cytoplasmic tail. The extracellular domain can be released as a soluble protein. TMEFF1 selectively regulates nodal but not activin signaling through direct binding to the nodal co-receptor, Cripto.