

DESCRIPTION

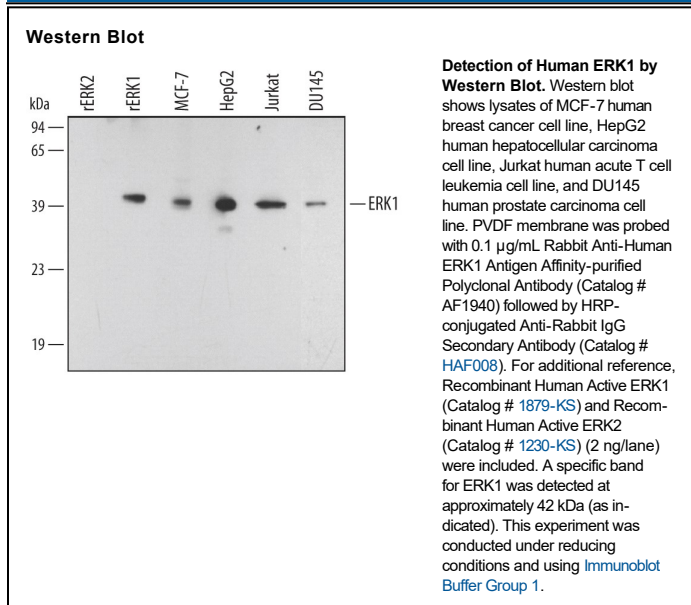
Species Reactivity	Human
Specificity	Detects human ERK1 in Western blots. Because the peptide immunogen corresponds to a region of ERK1 largely absent in ERK2, no reactivity with ERK2 is present.
Source	Polyclonal Rabbit IgG
Purification	Antigen Affinity-purified
Immunogen	Human ERK1 synthetic peptide Met1-Val28 Accession # P27361
Formulation	Lyophilized from a 0.2 µm filtered solution in PBS with Trehalose. See Certificate of Analysis for details. *Small pack size (-SP) is supplied either lyophilized or as a 0.2 µm filtered solution in PBS.

APPLICATIONS

Please Note: Optimal dilutions should be determined by each laboratory for each application. *General Protocols* are available in the *Technical Information* section on our website.

	Recommended Concentration	Sample
Western Blot	0.1 µg/mL	See Below

DATA



PREPARATION AND STORAGE

Reconstitution	Reconstitute at 0.2 mg/mL in sterile PBS.
Shipping	The product is shipped at ambient temperature. Upon receipt, store it immediately at the temperature recommended below. *Small pack size (-SP) is shipped with polar packs. Upon receipt, store it immediately at -20 to -70 °C
Stability & Storage	Use a manual defrost freezer and avoid repeated freeze-thaw cycles. <ul style="list-style-type: none"> ● 12 months from date of receipt, -20 to -70 °C as supplied. ● 1 month, 2 to 8 °C under sterile conditions after reconstitution. ● 6 months, -20 to -70 °C under sterile conditions after reconstitution.

BACKGROUND

ERK1 is a protein Serine/Threonine kinase that is a member of the extracellular signal-regulated kinases (ERKs) which are activated in response to numerous growth factors and cytokines (1). Activation of ERK1 requires both tyrosine and threonine phosphorylation that is mediated by MEK. ERK1 is ubiquitously distributed in tissues with the highest expression in heart, brain, and spinal cord. Activated ERK1 translocates into the nucleus where it phosphorylates various transcription factors.