

DESCRIPTION

Species Reactivity	Human
Specificity	Detects human Fibronectin in direct ELISAs and Western blots.
Source	Polyclonal Sheep IgG
Purification	Antigen Affinity-purified
Immunogen	Human plasma-derived Fibronectin
Formulation	Lyophilized from a 0.2 µm filtered solution in PBS with Trehalose. See Certificate of Analysis for details. *Small pack size (-SP) is supplied either lyophilized or as a 0.2 µm filtered solution in PBS.

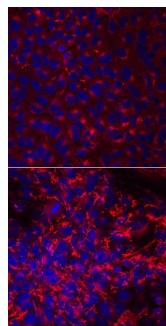
APPLICATIONS

Please Note: Optimal dilutions should be determined by each laboratory for each application. *General Protocols* are available in the *Technical Information* section on our website.

	Recommended Concentration	Sample
Western Blot	0.1 µg/mL	Human Fibronectin (Catalog # 1918-FN)
Immunocytochemistry	5-15 µg/mL	See Below
Immunohistochemistry	5-15 µg/mL	See Below

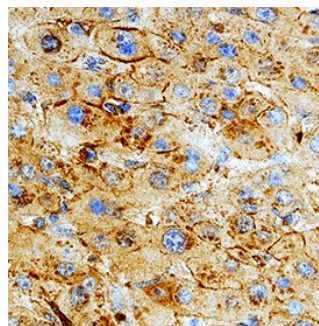
DATA

Immunocytochemistry



Fibronectin in A549 Human Cell Line. Fibronectin was detected in immersion fixed A549 human lung carcinoma cell line untreated (top panel) or treated with 10 ng/mL TGF-β (Catalog # 240-B, lower panel) for 48 hours using Sheep Anti-Human Fibronectin Antigen Affinity-purified Polyclonal Antibody (Catalog # AF1918) at 10 µg/mL for 3 hours at room temperature. Cells were stained using the NorthernLights™ 557-conjugated Anti-Sheep IgG Secondary Antibody (red; Catalog # NL010) and counterstained with DAPI (blue). View our protocol for [Fluorescent ICC Staining of Cells on Coverslips](#).

Immunohistochemistry



Fibronectin in Human Liver. Fibronectin was detected in immersion fixed paraffin-embedded sections of human liver using Sheep Anti-Human Fibronectin Antigen Affinity-purified Polyclonal Antibody (Catalog # AF1918) at 10 µg/mL overnight at 4 °C. Tissue was stained using the Anti-Sheep HRP-DAB Cell & Tissue Staining Kit (brown; Catalog # CTS019) and counterstained with hematoxylin (blue). Specific staining was localized to plasma membranes in hepatocytes. View our protocol for [Chromogenic IHC Staining of Paraffin-embedded Tissue Sections](#).

PREPARATION AND STORAGE

Reconstitution	Reconstitute at 0.2 mg/mL in sterile PBS.
Shipping	The product is shipped at ambient temperature. Upon receipt, store it immediately at the temperature recommended below. *Small pack size (-SP) is shipped with polar packs. Upon receipt, store it immediately at -20 to -70 °C
Stability & Storage	Use a manual defrost freezer and avoid repeated freeze-thaw cycles. <ul style="list-style-type: none"> ● 12 months from date of receipt, -20 to -70 °C as supplied. ● 1 month, 2 to 8 °C under sterile conditions after reconstitution. ● 6 months, -20 to -70 °C under sterile conditions after reconstitution.

BACKGROUND

Plasma Fibronectin is a secreted dimeric protein. It is involved in cell adhesion, migration, wound healing, and other cellular processes. Human Fibronectin shares 92% and 90% amino acid sequence homology with bovine and mouse Fibronectin, respectively.