

DESCRIPTION

Species Reactivity	Mouse
Specificity	Detects mouse TIM-2 in direct ELISAs and Western blots. In direct ELISAs and Western blots, less than 2% cross-reactivity with recombinant human TIM-1 and recombinant mouse TIM-3 is observed.
Source	Polyclonal Goat IgG
Purification	Antigen Affinity-purified
Immunogen	Mouse myeloma cell line NS0-derived recombinant mouse TIM-2 His22-Asn229 Accession # NP_599010
Formulation	Lyophilized from a 0.2 µm filtered solution in PBS with Trehalose. See Certificate of Analysis for details. *Small pack size (-SP) is supplied as a 0.2 µm filtered solution in PBS.

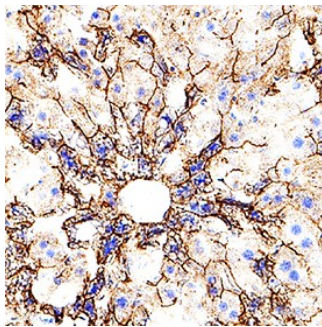
APPLICATIONS

Please Note: Optimal dilutions should be determined by each laboratory for each application. *General Protocols* are available in the *Technical Information* section on our website.

	Recommended Concentration	Sample
Western Blot	0.1 µg/mL	Recombinant Mouse TIM-2
Immunohistochemistry	1-15 µg/mL	See Below

DATA

Immunohistochemistry



TIM-2 in Mouse Liver. TIM-2 was detected in perfusion fixed frozen sections of mouse liver using Goat Anti-Mouse TIM-2 Antigen Affinity-purified Polyclonal Antibody (Catalog # AF1885) at 1.7 µg/mL for 1 hour at room temperature followed by incubation with the Anti-Goat IgG VisUCyte™ HRP Polymer Antibody (Catalog # VC004). Tissue was stained using DAB (brown) and counterstained with hematoxylin (blue). Specific staining was localized to sinusoids. View our protocol for [IHC Staining with VisUCyte HRP Polymer Detection Reagents](#).

PREPARATION AND STORAGE

Reconstitution	Reconstitute at 0.2 mg/mL in sterile PBS.
Shipping	The product is shipped at ambient temperature. Upon receipt, store it immediately at the temperature recommended below. *Small pack size (-SP) is shipped with polar packs. Upon receipt, store it immediately at -20 to -70 °C
Stability & Storage	Use a manual defrost freezer and avoid repeated freeze-thaw cycles. <ul style="list-style-type: none"> ● 12 months from date of receipt, -20 to -70 °C as supplied. ● 1 month, 2 to 8 °C under sterile conditions after reconstitution. ● 6 months, -20 to -70 °C under sterile conditions after reconstitution.

BACKGROUND

TIM-2 is a type I membrane protein and is a member of the TIM protein family. This protein family is characterized by their conserved immunoglobulin and mucin domains, as well as by their expression on activated T cells. TIM-2 is a receptor for Sema 4A, which is expressed on dendritic cells and B cells. Sema 4A has been shown to enhance T cell activation.