

## DESCRIPTION

<b>Species Reactivity</b>	Human
<b>Specificity</b>	Detects human Integrin $\beta$ 2 in direct ELISAs and Western blots. In direct ELISAs and Western blots, less than 5% cross-reactivity with recombinant human (rh) Integrin $\beta$ 1, rhIntegrin $\beta$ 3, and recombinant mouse Integrin $\beta$ 6 is observed.
<b>Source</b>	Polyclonal Goat IgG
<b>Purification</b>	Antigen Affinity-purified
<b>Immunogen</b>	Mouse myeloma cell line NS0-derived recombinant human Integrin $\beta$ 2 Gln23-Asn700 Accession # AAA59490
<b>Endotoxin Level</b>	<0.10 EU per 1 $\mu$ g of the antibody by the LAL method.
<b>Formulation</b>	Lyophilized from a 0.2 $\mu$ m filtered solution in PBS with Trehalose. See Certificate of Analysis for details. *Small pack size (-SP) is supplied as a 0.2 $\mu$ m filtered solution in PBS.

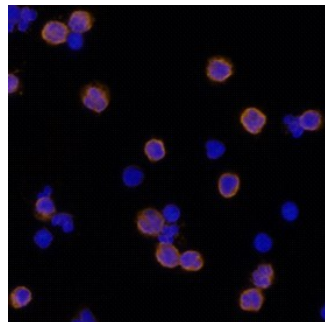
## APPLICATIONS

**Please Note:** Optimal dilutions should be determined by each laboratory for each application. *General Protocols* are available in the *Technical Information* section on our website.

	Recommended Concentration	Sample
<b>Western Blot</b>	0.1 $\mu$ g/mL	Recombinant Human Integrin $\alpha$ X $\beta$ 2 (Catalog # 5755-AX)
<b>Flow Cytometry</b>	2.5 $\mu$ g/10 <sup>6</sup> cells	Human peripheral blood mononuclear cells
<b>Immunocytochemistry</b>	5-15 $\mu$ g/mL	See Below
<b>CyTOF-ready</b>	Ready to be labeled using established conjugation methods. No BSA or other carrier proteins that could interfere with conjugation.	
<b>Adhesion Blockade</b>	The adhesion of HSB2 human peripheral blood acute lymphoblastic leukemia cells (5 x 10 <sup>4</sup> cells/well) to immobilized Recombinant Human ICAM-1/CD54 Fc Chimera (Catalog # 720-1C, 12.5 $\mu$ g/mL, 100 $\mu$ L/well) was maximally inhibited (80-100%) by 20 $\mu$ g/mL of the antibody.	

## DATA

### Immunocytochemistry



**Integrin  $\beta$ 2/CD18 in Human PBMCs.**  
Integrin  $\beta$ 2/CD18 was detected in immersion fixed human peripheral blood mononuclear cells (PBMCs) using 10  $\mu$ g/mL Goat Anti-Human Integrin  $\beta$ 2/CD18 Antigen Affinity-purified Polyclonal Antibody (Catalog # AF1730) for 3 hours at room temperature. Cells were stained with the NorthernLights™ 557-conjugated Anti-Goat IgG Secondary Antibody (red; Catalog # NL001) and counterstained with DAPI (blue). View our protocol for [Fluorescent ICC Staining of Non-adherent Cells](#).

## PREPARATION AND STORAGE

<b>Reconstitution</b>	Reconstitute at 0.2 mg/mL in sterile PBS.
<b>Shipping</b>	The product is shipped at ambient temperature. Upon receipt, store it immediately at the temperature recommended below. *Small pack size (-SP) is shipped with polar packs. Upon receipt, store it immediately at -20 to -70 °C
<b>Stability &amp; Storage</b>	<b>Use a manual defrost freezer and avoid repeated freeze-thaw cycles.</b> <ul style="list-style-type: none"> <li>• 12 months from date of receipt, -20 to -70 °C as supplied.</li> <li>• 1 month, 2 to 8 °C under sterile conditions after reconstitution.</li> <li>• 6 months, -20 to -70 °C under sterile conditions after reconstitution.</li> </ul>

## BACKGROUND

Integrin  $\beta$ 2 is a transmembrane protein expressed by all leukocytes. It occurs in heterodimeric complexes with Integrin subunits  $\alpha$ D,  $\alpha$ L (complex also known as LFA-1),  $\alpha$ M (Mac-1), or  $\alpha$ X (CR-4). These complexes are important in adhesion and leukocyte trafficking.